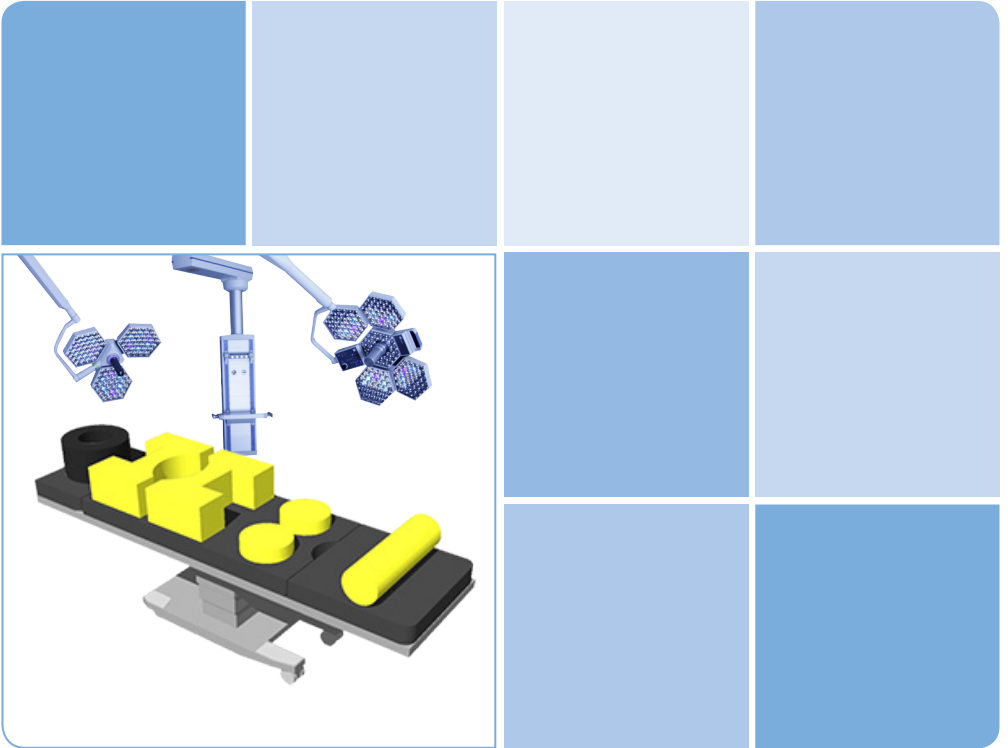


ESWELL positioning pads



Simonsen & Weel

ESWELL

By Simonsen & Weel established in 1817

ESWELL positioning pads

About ESWELL

Our ESWELL mattresses and positioning pads for the operating room are developed in collaboration with leading experts within the health care sector in Scandinavia and other countries.

Our ESWELL products are designed to improve the positioning of the patient during surgery, and at the same time they reduce the risk of developing pressure injuries.

Our ESWELL products increase the pressure distribution, and thereby improve circulation of the blood. They secure comfortable positioning of the patient even in awkward positions. The pads are easy to use and provide help when re-positioning.

The first ESWELL products were introduced in 2006, and today they are used in many hospitals in around 50 countries throughout the world.

The production of ESWELL

The ESWELL production site uses the most recent techniques and production methods at its plants in Denmark and Poland. Every day, more than 1,500 m³ foam is produced at one of Europe's largest foam machines placed in Denmark. The factory has more than 400 employees and a history of foam manufacturing that goes more than 40 years back.

All products are subject to a quality check, where two specialized employees control that all specifications and characteristics of the product comply with the standards. The factory is ISO 9001:2008 certified.

The Foam

All our ESWELL products are designed to ensure optimal positioning of the patient and at the same time reducing the risk of developing pressure injuries. This is ensured by combining up to seven different types of viscoelastic and HR foams. Some ESWELL products are designed with up to three different foam types.

Viscoelastic foam is a high-tech material originally developed by NASA. It absorbs body heat and molds itself gently to the body, and thus gives the body improved support during surgery. The pressure distributing properties of the foam provide unique patient comfort and at the same time it ensures a correct anatomical position for the surgeon.

Cover

The cover is a waterproof and breathing Decu-Tex© material, which mainly consists of polyurethane. For optimal hygiene all covers are fully-welded and are fitted with a water-resistant zipper, which makes it possible to remove and wash (up to 95°C). The zipper is protected by the cover in order to reduce irritation of the skin and to prevent liquids entering the foam.

Colours

The ESWELL products are manufactured in several different colours. Some hospitals use colours to classify and categorize the pads for different positionings, and other hospitals use colours to identify which department they belong to.



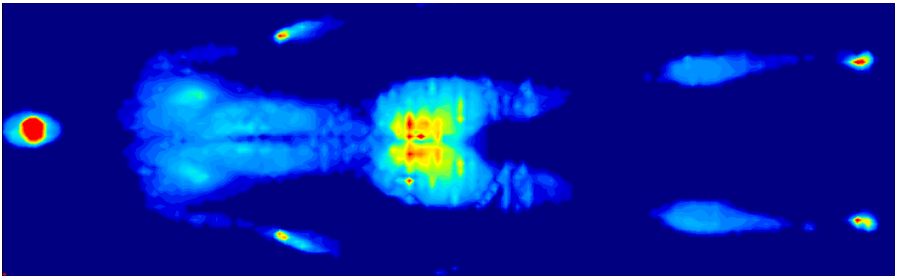
Environment & Allergy Friendly

None of the ESWELL products are allergenic or unhealthy as they do not contain PVC, cadmium, phthalates or latex.

Testing of ESWELL positioning pads

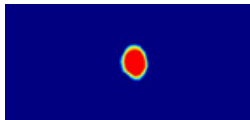
In order to ensure that our products fulfil the high requirements of our customers, we are testing all products in-house before putting them on the market.

For our positioning pads, we test them with a specific number of test persons of different age, gender, height and weight in order to get a broad picture of the capability of the pad.

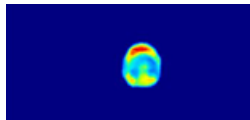


Afterwards, we do a statistical analysis of the outcome in order to see if the results are statistically significant.

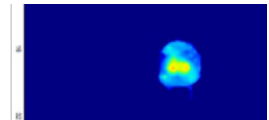
For some of our pads, we additionally conduct a comparison with other foam products as well as with various gel products on the market. Here, we directly compare the pressure distributing capabilities of the two pads.



No head pad



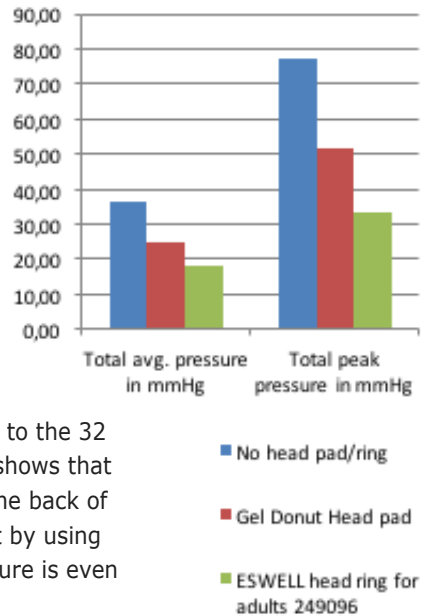
Gel donut head pad



ESWELL head ring
for adults 249096

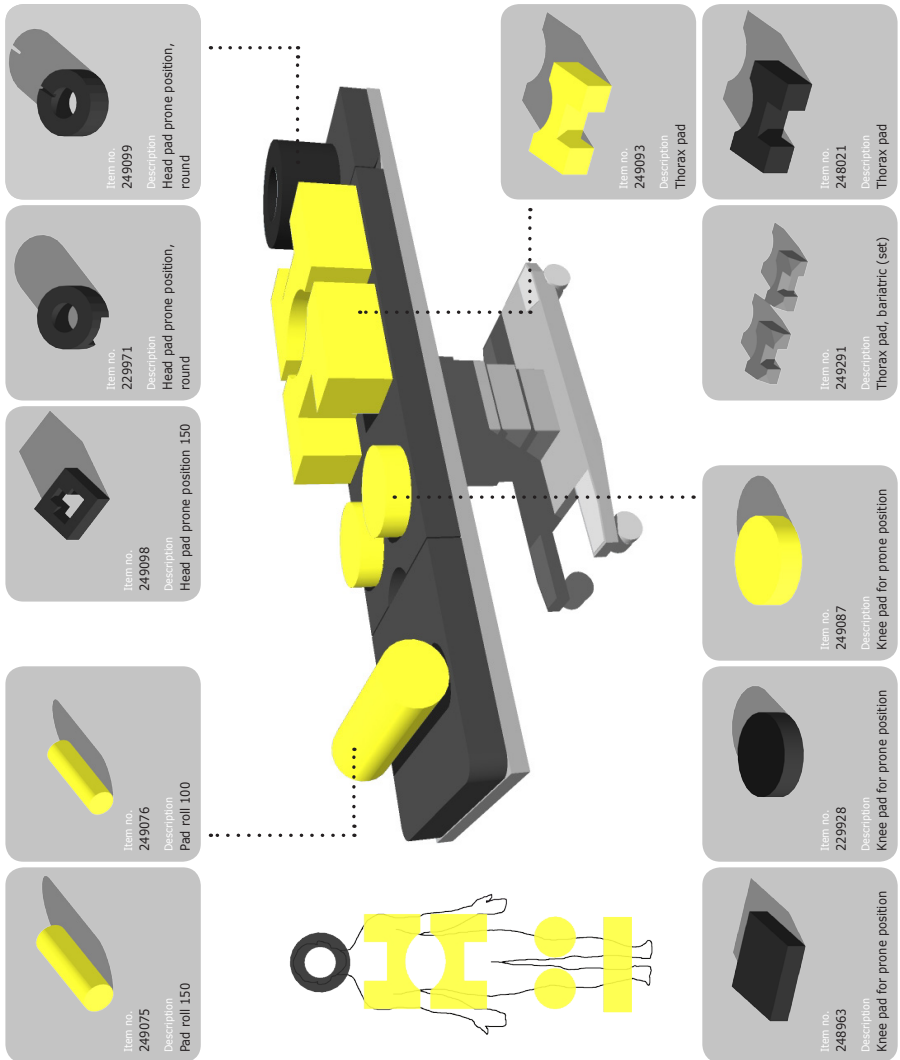
In this example, we are comparing our ESWELL head ring for adults (art. no. 249096) with a similar gel head ring and as a reference with no use of a head pad at all.

As shown by the graph, the maximum pressure on the back of the head experienced by a test person was close to 80 mmHg. By using a gel head pad, the maximum pressure was reduced to approx. 51 mmHg, which is still beyond the 32 mmHg we use as reference, as this is the pressure level where the capillaries close off*. However, when using the ESWELL head ring for adults, the maximum pressure measured was only approx. 33 mmHg, which is very close to the 32 mmHg we use as reference. This example shows that by using a gel head ring, the pressure on the back of the head is reduced, but it also shows, that by using our ESWELL head ring for adults, the pressure is even further reduced.

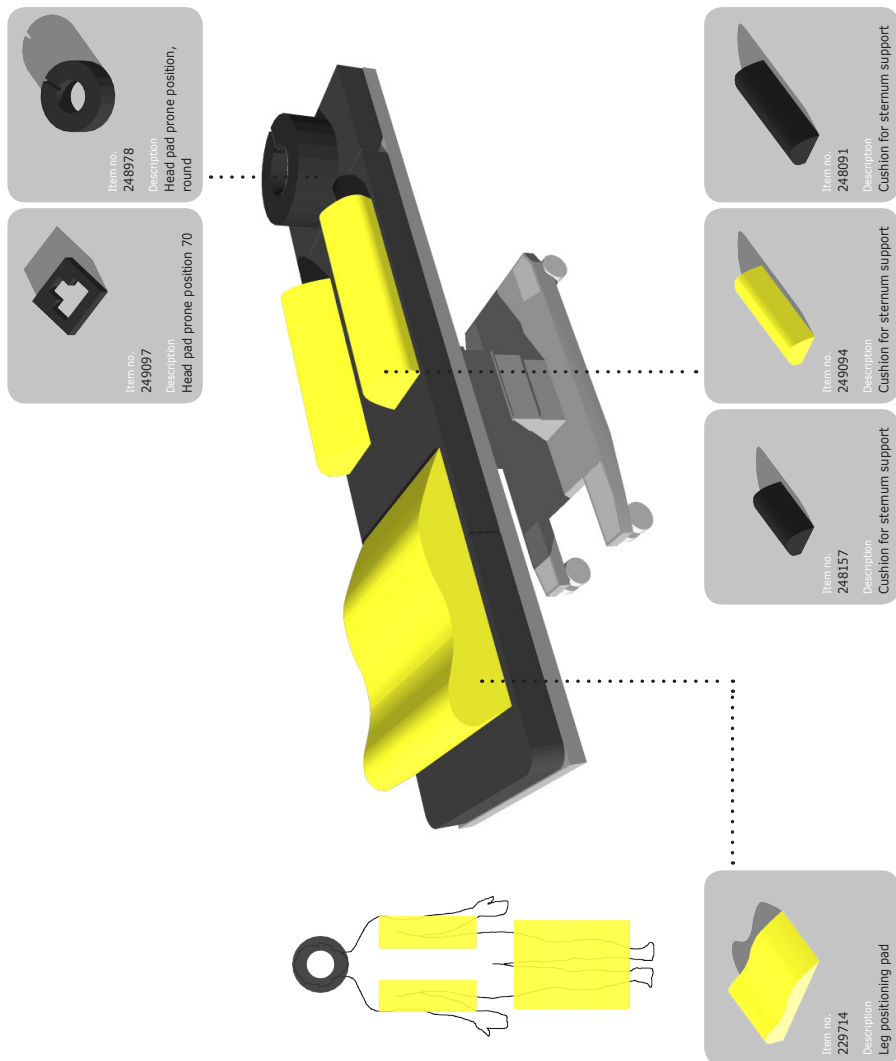


* Eugene M. Landis et al., Micro-injection studies of capillary blood pressure in human skin. Heart, 15(15):209-228, 1930).

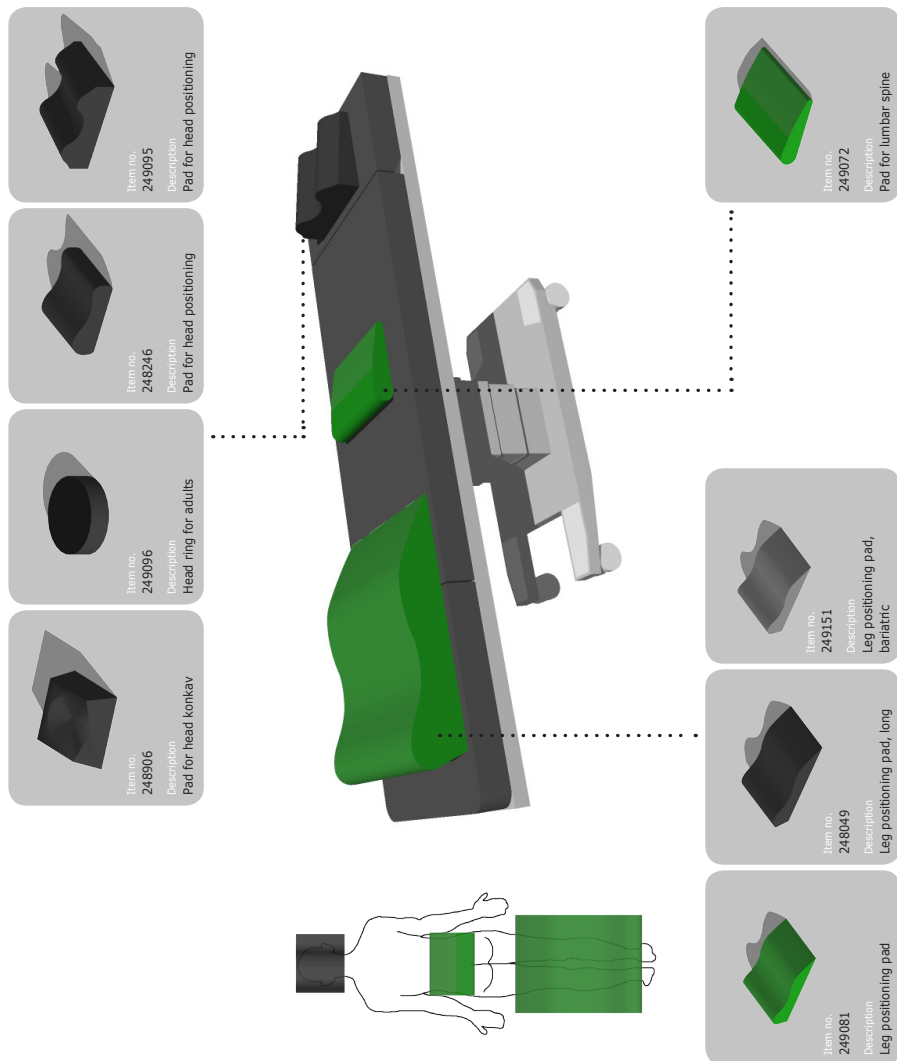
Prone positioning



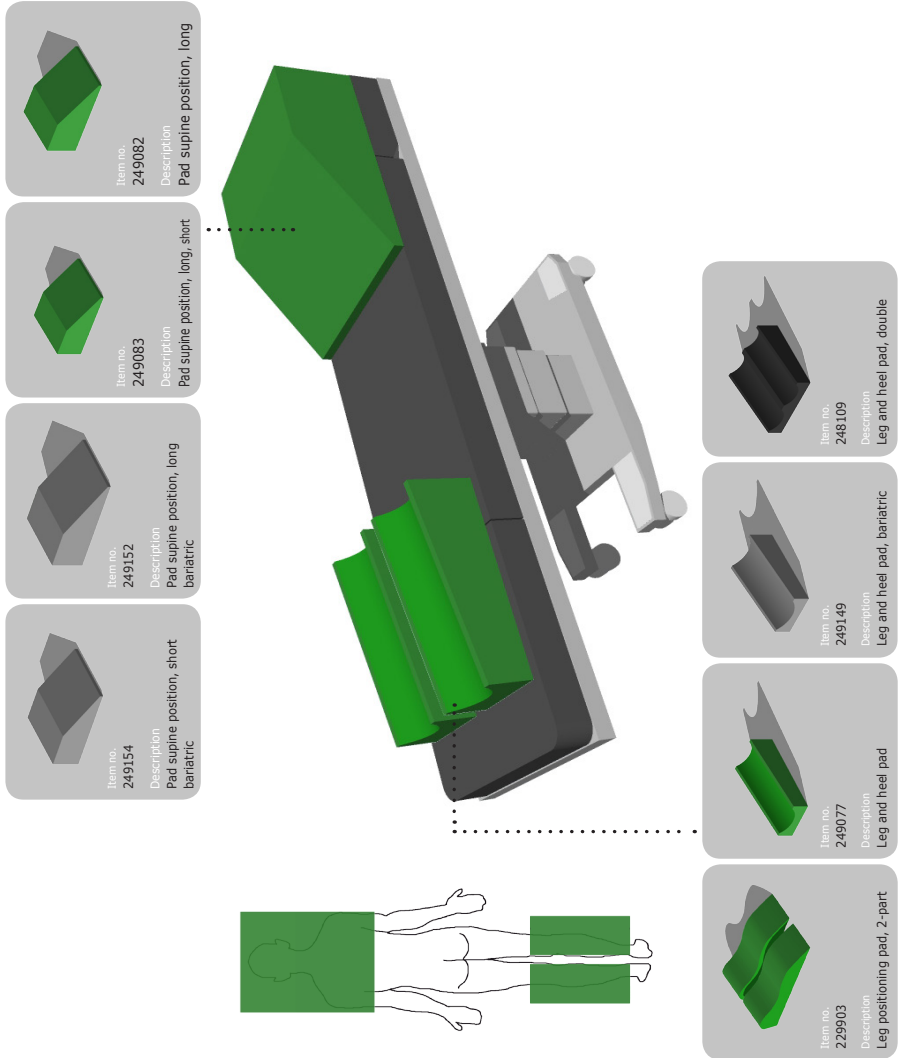
Prone positioning



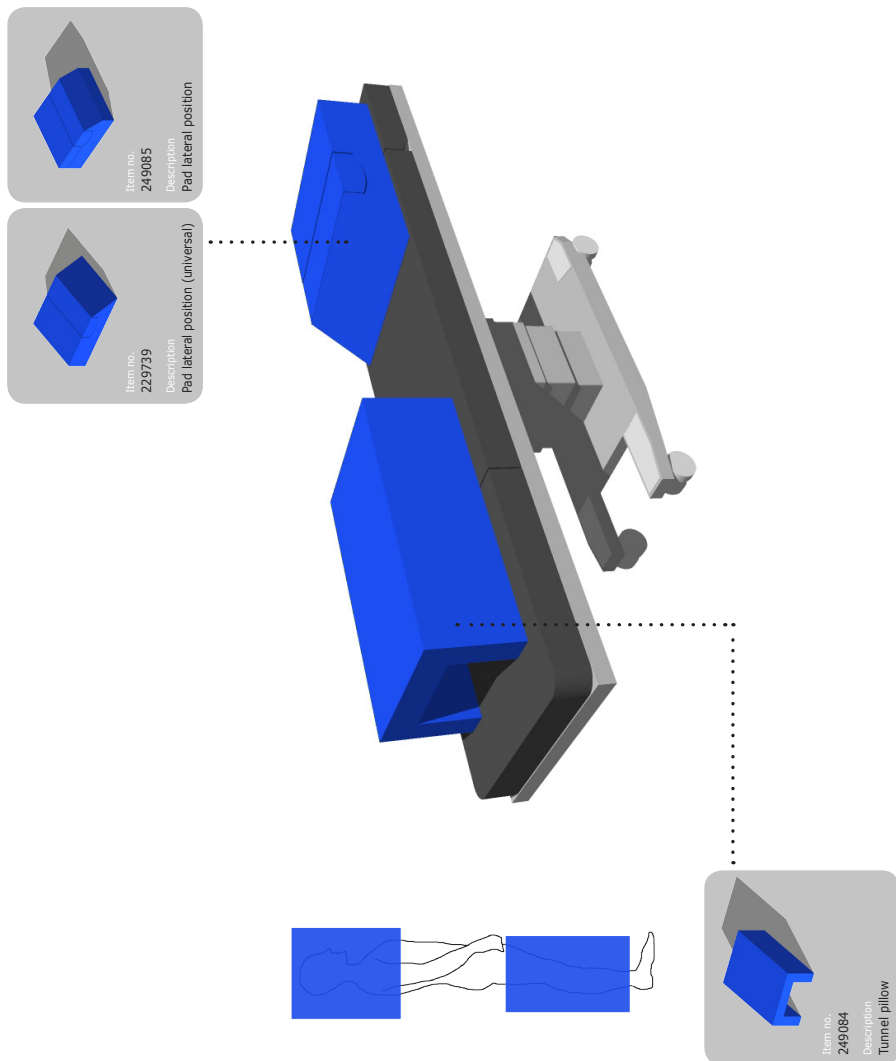
Supine positioning



Supine positioning


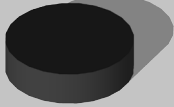


Lateral positioning

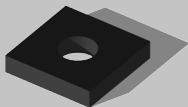



Head positioning

Head rings for supine position

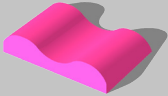
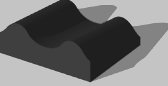

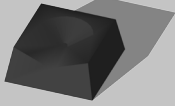
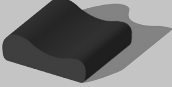
Item no.	Description	Colour	Size D x H in mm	
249090	Head ring for paediatrics	Pink	90 x 20	
249091	Head ring for children	Pink	130 x 30	
249096	Head ring for adults	Black	220 x 60	

Head pads for lateral position

Item no.	Description	Colour	Size L x W x H in mm / D x H in mm	
229755	Ear head pad	Black	250 x 250 x 50	
229566	Horseshoe head pad	Black	220 x 60	

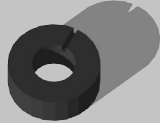

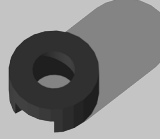
Head positioning



Head pads for supine position

Item no.	Description	Colour	Size L x W x H in mm	
249089	Pad for head positioning, paediatrics	Pink	300 x 200 x 70/40	
249095	Pad for head positioning	Black	250 x 300 x 110/70	
248832	Pad for head lab galle	Black	382 x 355 x 110/92	
248906	Pad for head konkav	Black	260 x 260 x 110	
248246	Pad for head positioning	Black	319 x 290 x 108/84	

Head positioning

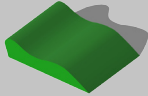

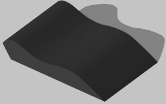
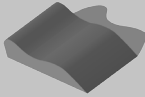
Head pads for prone position

Item no.	Description	Colour	Size D x H in mm	
248978	Head pad prone position, round	Black	320 x 120	
249099	Head pad prone position, round	Black	320 x 170	
229971	Head pad prone position, round	Black	320 x 170	

Item no.	Description	Colour	Size L x W x H in mm	
249097	Head pad prone position 70	Black	250 x 230 x 70	
249098	Head pad prone position 150	Black	280 x 250 x 150	

Leg positioning

Leg pads for supine/prone position

Item no.	Description	Colour	Size L x W x H in mm	
249081	Leg positioning pad	Green	650 x 500 x 140/109	
229714	Leg positioning pad	Yellow	650 x 500 x 140/109	
248049	Leg positioning pad, long	Black	750 x 500 x 140/109	
249151	Leg positioning pad, bariatric	Grey	650 x 500 x 140/109	

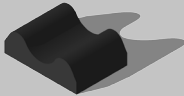
Leg positioning

Leg pads for supine position

Item no.	Description	Colour	Size L x W x H in mm	
229903	Leg positioning pad, 2-part	Green	650 x 250 x 140/109	
Item no.	Description	Colour	Size L x W x H in mm	
248982	Leg elevation pad	Blue	750 x 310 x 240	

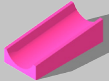
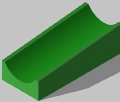
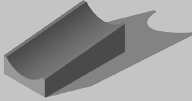
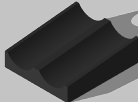
Leg positioning

Heel pads for supine position

Item no.	Description	Colour	Size L x W x H in mm	
248461	Heel pad single, short	Black	270 x 190 x 90/40	


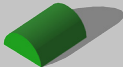
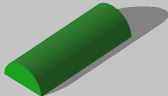
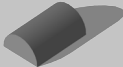
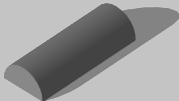
Leg positioning

Heel pads for supine position

Item no.	Description	Colour	Size L x W x H in mm	
249078	Leg and heel pad, paediatrics	Pink	380 x 180 x 110/70	
249077	Leg and heel pad	Green	500 x 220 x 150/100	
249149	Leg and heel pad, bariatric	Grey	500 x 260 x 150/100	
Item no.	Description	Colour	Size L x W x H in mm	
248109	Leg and heel pad, double	Black	500 x 440 x 150/100	

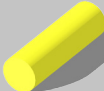
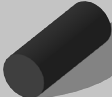
Leg positioning

Leg pads for supine position

Item no.	Description	Colour	Size L x W x H in mm	
249092	Pad semi circular shaped, paediatrics	Pink	300 x 50 x 50	
249074	Pad semi circular shaped 250	Green	250 x 200 x 100	
249073	Pad semi circular shaped 500	Green	500 x 200 x 100	
249153	Pad semi circular shaped 250, bariatric	Grey	250 x 200 x 110	
249148	Pad semi circular shaped 500, bariatric	Grey	500 x 200 x 110	

Leg positioning

Pad rolls for prone position

Item no.	Description	Colour	Size D x H in mm	
249076	Pad roll 100	Yellow	100 x 350	
249075	Pad roll 150	Yellow	150 x 500	
248252	Pad roll 200	Black	200 x 500	


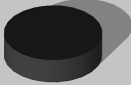
Prone positioning

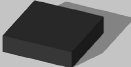
Jack Knife pads

Item no.	Description	Colour	Size L x W x H in mm	
249086	Jack Knife pad	Yellow	330 x 620/540 x 380	
248610	Jack Knife pad	Black	330 x 620/540 x 380	

Prone positioning


Knee pads

Item no.	Description	Colour	Size D x H in mm	
249087	Knee pad for prone position	Yellow	220 x 60	
229928	Knee pad for prone position	Black	220 x 60	

Item no.	Description	Colour	Size L x W x H in mm	
248963	Knee pad for prone position	Black	200 x 200 x 50	

Prone positioning

Thorax/abdominal pads

Item no.	Description	Colour	Size L x W x H in mm	
249093	Thorax pad	Yellow	300 x 500 x 160	
248021	Thorax pad	Black	300 x 500 x 160	
249291	Thorax pad, bariatric (set)	Grey	250 x 500 x 160/ 300 x 500 x 160	

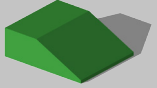
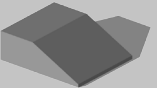
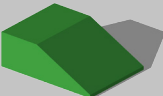
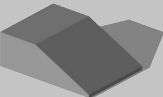
Prone positioning

Thorax/abdominal pads

Item no.	Description	Colour	Size L x W x H in mm	
249088	Cushion for sternum support, paediatrics	Pink	250 x 90 x 60	
248157	Cushion for sternum support, short	Black	350 x 170 x 120	
249094	Cushion for sternum support	Yellow	550 x 170 x 120	
248091	Cushion for sternum support	Black	550 x 170 x 120	

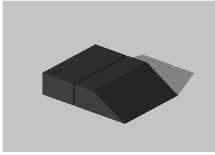
Supine positioning

Pads for intubation

Item no.	Description	Colour	Size L x W x H in mm	
249083	Pad supine position, short	Green	650 x 550 x 210/30	
249154	Pad supine position, short bariatric	Grey	650 x 550 x 210/30	
249082	Pad supine position, long	Green	750 x 550 x 250/30	
249152	Pad supine position, long bariatric	Grey	750 x 550 x 250/30	

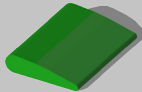
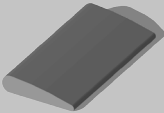
Supine positioning

Pads for intubation

Item no.	Description	Colour	Size L x W x H in mm	
248159	Intubation pad, 2-parts short	Black	650 x 520 x 150	
248158	Intubation pad, 2-parts long	Black	800 x 520 x 250	

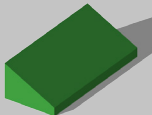
Supine positioning

Lumbar pads for spine position

Item no.	Description	Colour	Size L x W x H in mm	
249072	Pad for lumbar spine	Green	230 x 320 x 55	
249147	Pad for lumbar spine, bariatric	Grey	230 x 450 x 55	

Supine positioning

Wedges

Item no.	Description	Colour	Size L x W x H in mm	
249079	Wedge, paediatrics	Pink	280 x 150 x 60	
249080	Wedge, flat	Green	350 x 150 x 100	
249150	Wedge, bariatric	Grey	400 x 170 x 130	

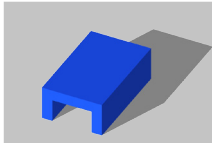
Lateral positioning

Pads/mattresses for lateral position

Item no.	Description	Colour	Size L x W x H in mm	
248352	Mattress lateral position, two parts flat	Black	2000 x 540 x 120	
248598	Mattress lateral position, two parts	Black	2000 x 540 x 170/100	
Item no.	Description	Colour	Size L x W x H in mm	
229739	Pad lateral position (universal)	Blue	600 x 500 x 150	
Item no.	Description	Colour	Size L x W x H in mm	
249085	Pad lateral position	Blue	550 x 500 x 200/100	

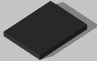

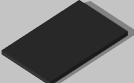
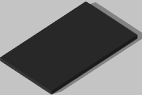
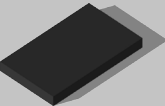
Lateral positioning

Tunnel pillow

Item no.	Description	Colour	Size L x W x H in mm	
249084	Tunnel pillow	Blue	650 x 400 x 220	


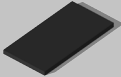
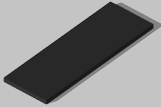
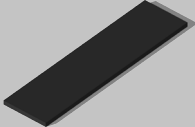
Various pads for positioning

Plane pads

Item no.	Description	Colour	Size L x W x H in mm	
249108	Plane pad 22	Black	220 x 170 x 20	
249106	Plane pad 35	Black	350 x 300 x 20	
249104	Plane pad 40	Black	400 x 250 x 20	
249105	Plane pad 50	Black	500 x 300 x 20	
249107	Plane pad 50	Black	500 x 300 x 50	

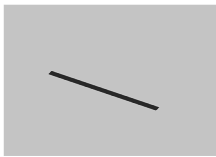




Various pads for positioning

Mattress toppers

Item no.	Description	Colour	Size L x W x H in mm	
249139	Mattress topper 50	Black	500 x 520 x 50	
249140	Mattress topper 100	Black	1000 x 520 x 50	
249141	Mattress topper 150	Black	1500 x 520 x 50	
249142	Mattress topper 200	Black	2000 x 520 x 50	

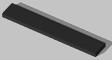
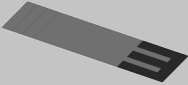
Various pads for positioning

Leg straps/velcro straps

Item no.	Description	Colour	Size in mm	
248851	Velcro straps, hook	Black	50 wide	
248852	Velcro straps, loop	Black	50 wide	
213160	Nylon strap (pair)	Black	800 x 100 (400 mm velcro in the end)	
248144	Leg strap, nylon/velcro	Black	850 x 50 (300 mm velcro in both ends)	
248156	Leg straps, nylon	Black	2200 x 100	

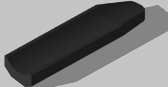
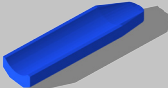
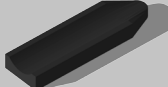
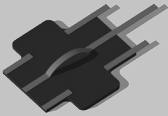
Various pads for positioning

Pads & belts

Item no.	Description	Colour	Size L x W x H in mm	
299771	Pad for legstrap	Black	700 x 120 x 30	
Item no.	Description	Colour	Size L x W x H in mm	
249100	Belt for bariatric surgery	Grey	1520 x 425 x 5	

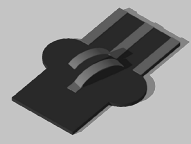

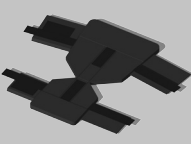
Various pads for positioning

Pads for arm holders

Item no.	Description	Colour	Size L x W x H in mm	
248019	Pad for Stockholm arm holder, curvet	Black	625 x 160 x 80	
250015	Pad for Stockholm arm holder, curvet	Blue	625 x 160 x 80	
248059	Pad for Stockholm arm holder, flat	Black	625 x 180 x 70	
Item no.	Description	Colour	Size L x W x H in mm	
248051	Pad for arm support	Black	520 x 540 x 20	

Various pads for positioning

Pads for leg holders

Item no.	Description	Colour	Size L x W x H in mm	
249102	Pad for leg holder Goepel	Black	770 x 550 x 20	
248108	Pad for leg holder Goepel	Black	400 x 210 x 100/20	
Item no.	Description	Colour	Size L x W x H in mm	
229563	Liner for blue Maquet boot (set)	Black	-	

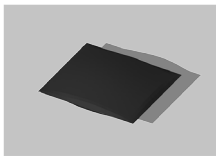
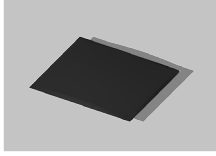
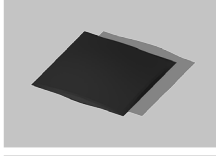
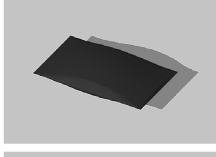
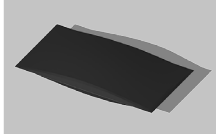
Various pads for positioning

Pads for different positionings

Item no.	Description	Colour	Size L x W x H in mm	
249101	Shoulder pad, L-shaped	Black	165 x 180 x 150	
Item no.	Description	Colour	Size D x H in mm	
249103	Pad for counter traction post 220	Black	220 x 280	
Item no.	Description	Colour	Size L x W x H in mm	
248182	Pad for washing support	Black	230 x 230 x 230/160	
229204	Pad for washing support	Black	200 x 310 x 300/250	

Various pads for positioning

Granulat pads/multi positioning pads

Item no.	Description	Colour	Size L x W x H in mm	
248839	Positioning pad, granulat	Black	350 x 300 x 70	
248599	Positioning pad, granulat	Black	460 x 400 x 50	
248302	Positioning pad, granulat	Black	480 x 480 x 90	
248592	Positioning pad, granulat	Black	500 x 300 x 90	
248305	Positioning pad, granulat	Black	750 x 400 x 100	

Documentation

ISO 9001:2008 Quality Management System

The company behind ESWELL, Simonsen & Weel A/S, is certified according to ISO 9001:2008.

ISO 14001:2004 Environment Management System

The company behind ESWELL, Simonsen & Weel A/S, is certified according to ISO 14001:2004.

Oeko-Tex Standard 100

The OEKO-TEX® Standard 100 is an independent test and certification system for textile raw, intermediate and end products at all stages of processing. Our Decu-TEX cover fulfils this standard.

Flammability (EN-597-1 & EN-597-2)

This standard lays down a test method to assess the ignitability of mattresses, upholstered bed bases or mattress pads when subjected to a smouldering ignition cigarette. All ESWELL products fulfil these standards.

CE certification

All ESWELL products are CE marked as medical devices, Class 1 and complies with Directive 93/42/EEC.

Biocompatibility (EN ISO 10993-5:2009)

The test is designed to determine the presence of leachable, toxic substances in materials and is carried out in accordance with BS EN ISO 10993-5. The result of the test was that our Decu-TEX cover is cytotoxic to those cells used under the conditions of the test.

Water Penetration Resistance (BS 3424 part 26)

The test according BS 3424 part 26 determines the resistance of a material to penetration by water for a specified period of time and pressure sequence. A visual observation is made to determine when, or if, penetration occurs. Our Decu-TEX cover has been tested and has passed the test.

Microclimate

This test evaluates the microclimatic ability of the mattress and cover to wick away and eliminate heat and moisture. The measuring of the micro-climatic ability of a product is very dependent on individual factors such as age, gender, nutritional state, and hormonal situation, but also on external factors such as temperature and humidity. Therefore, a very sensible standardization is necessary. Our products have been tested according to the thermal insulating effect (heat) and the moisture conducting properties (moisture).

Simonsen & Weel A/S is Denmark's oldest supplier of equipment to the Danish health-care sector, with a history dating back to 1817. We sell products from several of the world's leading manufacturers in areas such as surgical equipment, hospital and clinic equipment, medical technology, compression stockings, nutrition products and much more.

Today we have around 50 employees and most work from our head office just outside Copenhagen. The majority of our employees work as product specialists and consultants, covering the whole country including the Faroe Islands and Greenland.

In-house, we have a competent customer service department and a technical service department with specialists within each area.

It is Simonsen & Weel's philosophy that we only cooperate with leading manufacturers, thereby helping to strengthen our position as the Danish health sector's preferred partner.

Simonsen & Weel A/S

Vejlegaardsvej 59
DK-2665 Vallensbaek Strand
Denmark
Tel.: +45 70 25 56 10
Fax: +45 70 25 56 20
E-mail: eswell@sw.dk
www.eswell.eu