

REISON
MEDICAL

for user friendly accessories

innovation and design

Reison Medical first began making operating tables in the 1960s. Building on years of experience, the company now focuses on in-house production of accessories for operating tables.

Reison Medical aims to make work around the operating table easier. The accessories we have developed are simple to use and clean, and are anatomically adapted for both patients and staff. Reison Medical accessories are easily fastened with a special hook-on coupling.

Reison Medical make functional products of a clean design and with a smooth finish. We offer easy solutions that are created out of demand for function and quality from the international market.

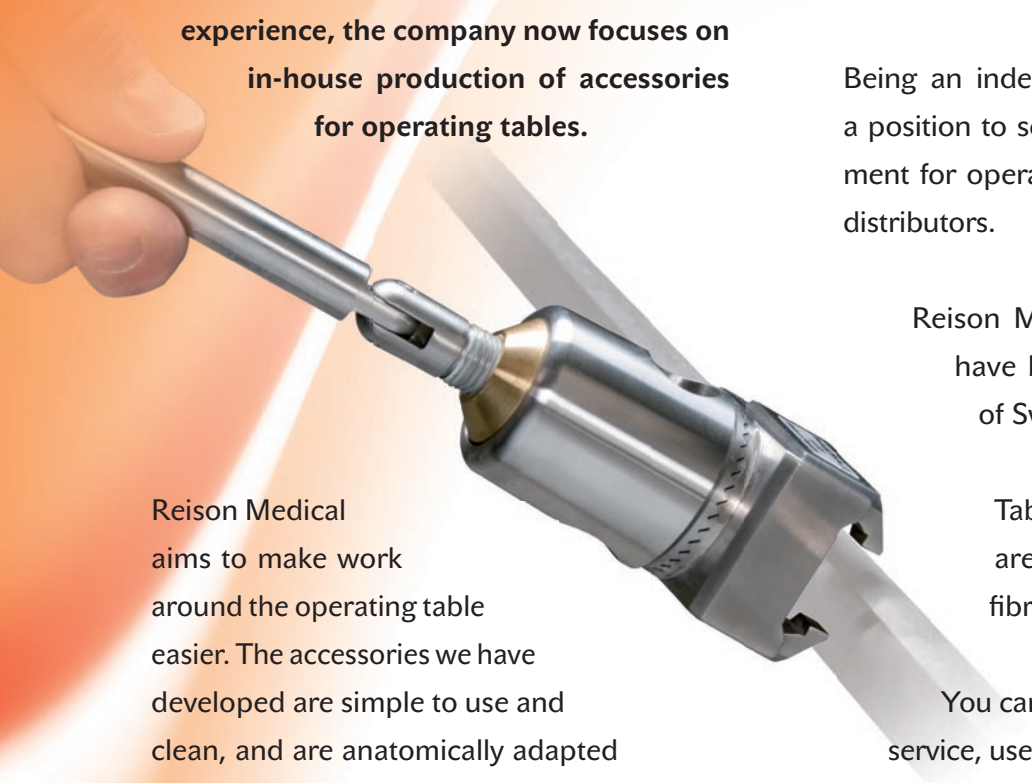
Today, we export more than 80% of our production to Europe as well as the US.

Being an independent company, we are in a position to serve as an interesting complement for operating table manufacturers and distributors.

Reison Medical make arm tables that have become trendsetters way out of Swedish borders.

Tables for arm and hand surgery are now available in light carbon fibre material.

You can always expect to get good service, user friendly products and quick deliveries from Reison Medical. All of our products are made in Sweden.



*Our trademark armboard with
"one hand" ball joint release.
Clamp with "hook on function".*



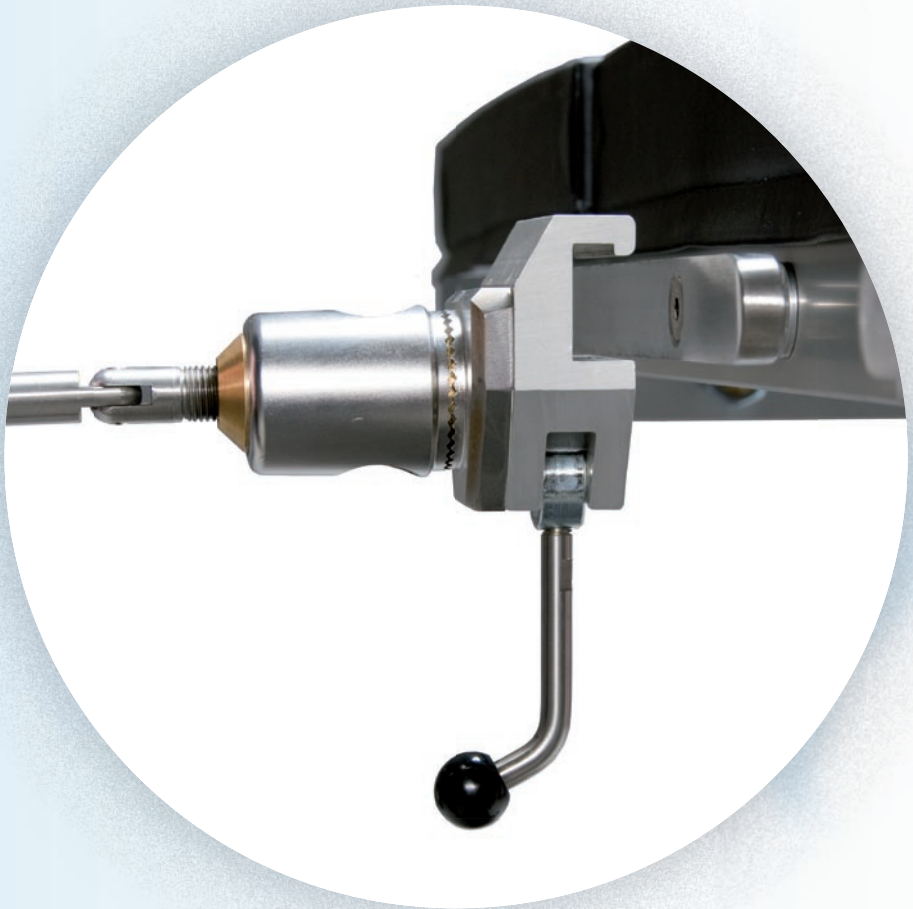
clamps

Reison Medical Clamps

Work at the operation table is often done under stress. This is why all appliances should be easy and flexible to handle.

We have developed a clamp concept offering the end user easy and smooth mounting.

We offer screw clamps and accessories that are made to meet the European, US and UK rail standards.



10018 CLAMP FOR ARMBOARD

Spare clamp for our armboards.
Compatible with old Reison armboards as well.



10019 CLAMP FOR ARMBOARD STD

Spare clamp for our armboards (with spacer).
Compatible with old Reison armboards as well.



10-301 ACCESSORY CLAMP

Standard clamp for "supports".
Hook on type in anodized aluminium.



10-304 RADIAL CLAMP

Rotatable clamp for post \varnothing 16–20 mm.
Hook on type for rail 25×10 mm.
(European standard).



10-307 CLAMP

Hook on type with separate locking lever
and also rotatable! For post \varnothing 16–20 mm.
Available for US and UK siderail:
10-307-US, 10-307-UK



10-308 RADIAL CLAMP UNIVERSAL

Rotatable clamp for post \varnothing 16–20 mm.
For EU, US and UK accessory rail.



NEW!

10-305 RADIAL CLAMP "HOOK-ON"

For post 16–20 mm. "Hook on" type
(25×10 mm European standard).

Available for US and UK siderail:

10-305-US

10-305-UK



supports

Reison Medical Supports

The comfort for patients is of a crucial importance during an operation. Especially during extended times of anaesthesia, the patient-close supports must give good fixation and a maximum of comfort.

People are all of different shapes, so Reison Medical supply pads that are easy to change for all kinds of applications.



10-230-F FLEXIBLE HEAD SUPPORT

Multi adjustable. For ENT-plastic and eye surgery.
Standard fittings: 2 pins Ø 15 mm C-C 106 mm.
Other fittings available upon request.





10-353 KNEE ARTHROSCOPY HOLDER

Crank operated adjustment. Height and angle can be adjusted.
3 cushions included (clamp 10-304, 10-305 or 10-308 not included).



10-360 LATERAL SUPPORT

Lateral support, narrow with curved cushion, rotatable. Length of post 350 mm.
(clamp 10-301 not included).



10-350 SHOULDER SUPPORTS

Shoulder supports, pair. 2 types of cushions included, concave and plane. Length of post 350 mm. (2 × clamp 10-301 not included).



10-369 SUPPORTING ROLL, horizontal

Diameter 135 mm. Length 275 mm.
Length of post 350 mm.
(clamp 10-301 not included).



10-365 LATERAL SUPPORT, wide

Curved cushion 200×200 mm.
Length of post 350 mm.
(clamp 10-301 not included).



10-333 CIRCULAR HEAD CUSHION

Cushion for head fixation. Antistatic.



10-368 SUPPORTING CUSHION, vert

Vertical (upright) diameter 135 mm.
Length 275 mm. Length of post 350 mm.
(clamp 10-301 not included).

supports



10-560 LATERAL SUPPORT, narrow

Adjustable with 2 models of cushions included: 1 plane and 1 multifunctional curved cushion. Length of post 350 mm. (clamp 10-301 not included).



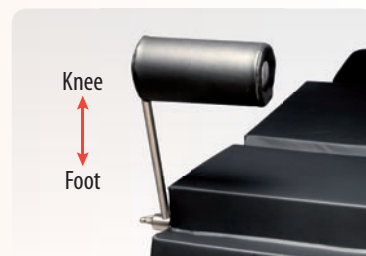
10-565 LATERAL SUPPORT with MULTI POSITIONING PAD

2 models of cushions included: 1 plane and 1 multifunctional curved integral foam cushion, 4 different positions. Length of post 350 mm. (clamp 10-301 not included).



10-359 ANGULAR ACCESSORY RAIL

With "hook on" clamp included (25×10 mm).
US clamp & rail: 10-359-US
UK clamp & rail: 10-359-UK



10-367 TIBIA SUPPORT

Diameter 135 mm. Length 275 mm.
(clamp 10-304-P or 10-305-P not included).
Length of post 700 mm.



10-410 SUPPORTING FRAME

Clamp included.



10-450 LEG HOLDERS with BALL JOINT

Leg holders with integral foam cushions/pair. Post \varnothing 20 mm. 10-450-18 for post \varnothing 18 mm. (clamp 10-304, 10-305 or 10-308 not included).



10-452 PADDED STRAP

Comfort Strap for 10-450 Leg Holders, velcro fastening. Sold in pcs.

10-531 SAFETY SIDE RAILS

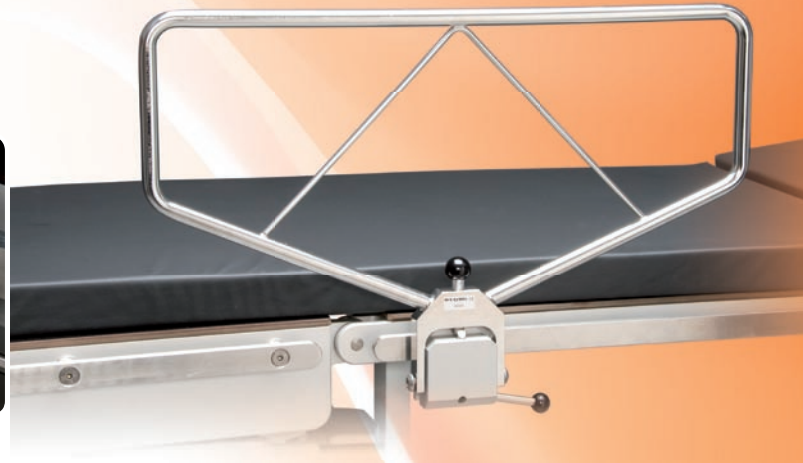
Foldable. Sold in pairs.

Available for US and UK rail:

10-531-US, 10-531-UK

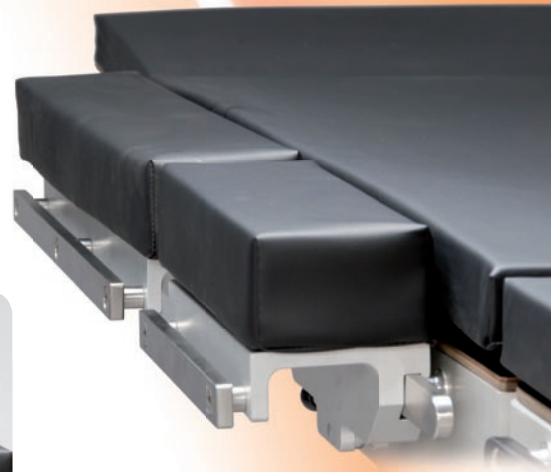


Option: Cover, pair, 10-531-H.



10-420 WIDENING SECTION(S)

Extruded alu profiles. "Hook on" type with easy and safe locking. Available in the following lengths: 240 mm, 300 mm, 455 mm and 500 mm.



10-366 ELBOW SUPPORT

To be mounted left or right on the side rail.

Height adjustable with "hook on" clamp.

Clamp available for US and UK siderail:

10-366-US, 10-366-UK



10-449 LEG HOLDERS XL

For Bariatric surgery. Medisoft filling for highest comfort.

Sold in pairs. Post Ø 20 mm. Available with post Ø 18 mm

10-449-18 (2 × clamps 10-304, 10-305 or 10-308 not included).



— armboards & surgery procedures —



10-380 ARMBOARD

Our popular armboard with "one hand" ball joint release. Clamp with "hook on function".

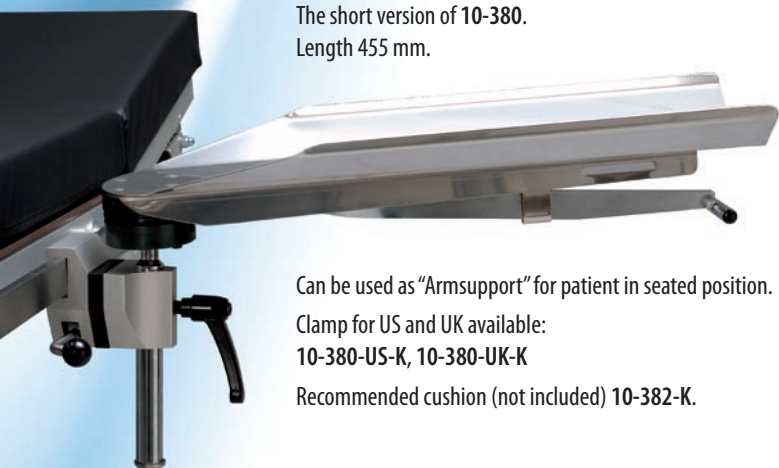
Clamp for US and UK accessory rail:
10-380 (Eur 25×10 mm), 10-380-US,
10-380-UK

Recommended cushions (not included):
10-381, 10-382, 10-382-H.

Available with "rotatable clamp"
10-387 for ex. "beach chair position".

10-380-K ARMBOARD, short

The short version of 10-380.
Length 455 mm.



Can be used as "Armsupport" for patient in seated position.

Clamp for US and UK available:
10-380-US-K, 10-380-UK-K

Recommended cushion (not included) 10-382-K.



10-387 ARMBOARD

With "one hand operated" ball joint release, rotatable clamp with "hook on" function (ex. for "beach chair" position).

Clamp for US and UK accessory side rail available: 10-387-US, 10-387-UK.

Recommended cushions (not included):
10-381, 10-382, 10-382-H.

Note: Extra long post for 10-380, 10-380-K and 10-387 available on request (+100 mm)



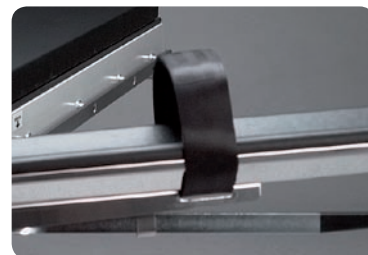
10-382-H COMFORT CUSHION for Armboard

High comfort cushion (viscolastic) with velcro fastening. For 10-380, 10-385 and 10-387. Colour: black (antistatic)



10-382-K COMFORT CUSHION for Armboard, short

High comfort cushion (viscolastic) for 10-380-K. Colour: black (antistatic).



10-383 STRAP FOR ARMBOARD

For 10-380 and 10-387.
Velcro fastening.

10-396 ARM & HAND SURGERY TABLE

Lightweight. Made from carbon fibre.
Twin clamps with "hook on function".

Glass fibre supporting leg included.
Left or right mounting.

Antistatic cushion included.

Metal free space (see picture).

Clamps available for US and UK siderail:
10-396-US, 10-396-UK

x-ray/carbon fibre



10-390-K ARM & HAND SURGERY TABLE

Without supporting leg. Clamps and cushion included.

Surface dimensions: 600×340 mm.

Clamps available for US and UK siderail:
10-390-US-K, 10-390-UK-K.



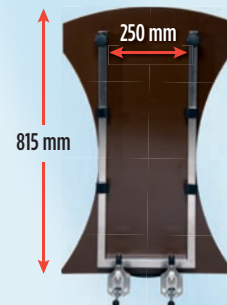
10-390 ARM & HAND SURGERY TABLE

Twin clamps with "hook on-height" adjustment.

Detachable supporting leg included
(left or right mounting).

Clamps available for US and UK siderail:
10-390-US, 10-390-UK.

Cushion included.



straps and fixation

Reison Medical Straps and Fixation

Products for fixation are under constant development work. New techniques in operating have made the use of separate leg plates more common.

Therefore, we have produced a new strap that guarantees the positioning of the patient's fore-leg in the middle of the leg plate, irrespective of the thickness of mattresses.



10-370 WRISTLET with Strap
Clamp included. Sold in pcs.



10-465 LEG & BODY STRAP
Velcro fastening.
Dimensions: 2100×85 mm



10-467 COMFORT LEG STRAP
For split leg section. Velcro fastening.
Length: 1100 mm
Width: 85 mm



10-466 LEG STRAP
Two piece with velcro fastening.
Length: 850 mm (velcro part: 450 mm)
Width: 85 mm



10-464 LEG & BODY STRAP, wide
"Hook" and velcro locking.



10-464-M LEG & BODY STRAP, wide
Velcro fastening.

10-468 LEG STRAP

Leg Strap/pair for split leg section
Adjustable strap to meet different
mattress thicknesses.
Velcro fastening.



10-373 LEG STRAP with clamps
Replacing 10-372. Available for US and
UK rail: 10-373-US, 10-373-UK

other accessories



light weight

10-313 ANAESTHESIA FRAME, carbon fibre

Made from carbon fibre. Telescopic extension arms with clamp included.

Clamp for accessory siderail available:
US 10-313-US and UK 10-313-UK.



10-315 EXTENSION ARM(S)

For Anaesthesia Frame 10-310. Sold in pcs.



10-310 ANAESTHESIA FRAME

Telescopic with a rotatable "hook on" clamp. Extension arms 10-315 optional.

Clamp for accessory siderail available:
US 10-310-US and UK 10-310-UK.



10-311 ANAESTHESIA FRAME

Flexible. Length 140 cm.
Hook on clamps included (25×10 mm).

10-311-US (US clamp) 140 cm
10-311-UK (UK clamp) 140 cm



10-312 ANAESTHESIA FRAME

Flexible. Length 180 cm.
Hook on clamps included (25×10 mm).

10-312-US (US clamp) 180 cm
10-312-UK (UK clamp) 180 cm



10-480 BACK & KIDNEY ELEVATOR

Crank operated elevation.
Adjustable width (490-550 mm) to fit various operating tables.



10-311-16 ANAESTHESIA FRAME

Flexible. Length 140 cm.
Clamp fittings Ø 16 mm.
Clamps not included (recom. 10-301).



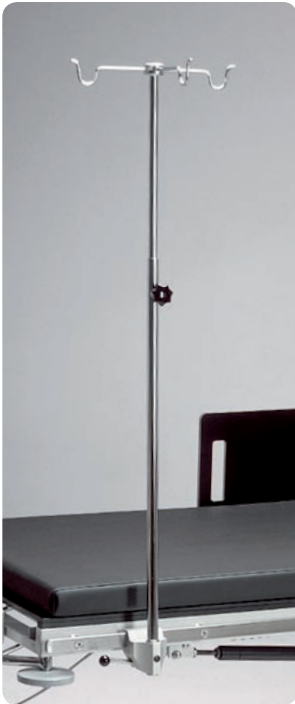
10-312-16 ANAESTHESIA FRAME

Flexible. Length 180 cm.
Clamp fittings Ø 16 mm.
Clamps not included (recom. 10-301).



10-400 INFUSION STAND

Rotatable "hook on" clamp with easy locking.
Available with:
US clamp **10-400-US**, UK clamp **10-400-UK**



10-401 INFUSION STAND

Upright. "Hook on" clamp included.
Available with US and UK clamp:
10-401-US, **10-401-UK**.



NEW
10-402 INFUSION STAND

One hand operated release and locking.
"Hook on" clamp included.
Available with US and UK clamp:
10-402-US, **10-402-UK**.

10-455
TRANSPORT HANDLES

Transport handles/pair supposed to be attached to 25×10 mm accessory side rail.

10-456
TRANSPORT HANDLES

Transport handles/pair, supposed to be attached to the 25×10 mm accessory side rail.

10-457
TRANSPORT HANDLES

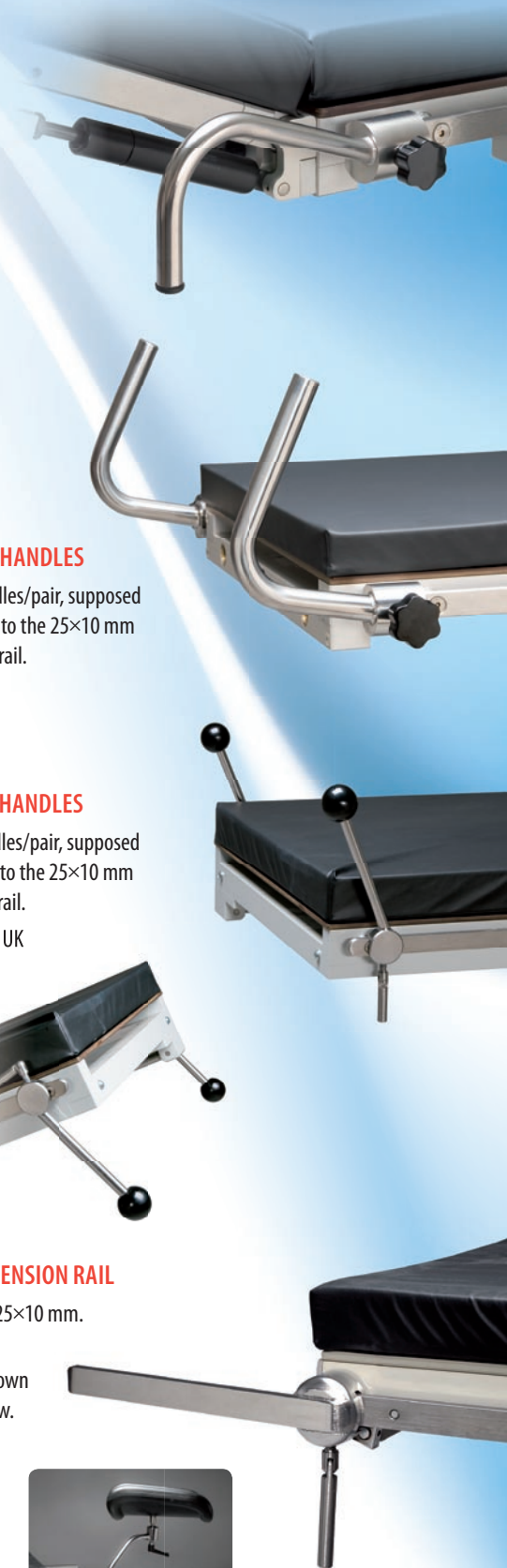
Transport handles/pair, supposed to be attached to the 25×10 mm accessory side rail.

10-457-UK for UK accessory rail.

10-491 EXTENSION RAIL

Extension rail 25×10 mm.
Sold in pair.

Application shown in picture below.



for the latest product updates



www.reison.se

Distributor



REISON
MEDICAL

for user friendly accessories