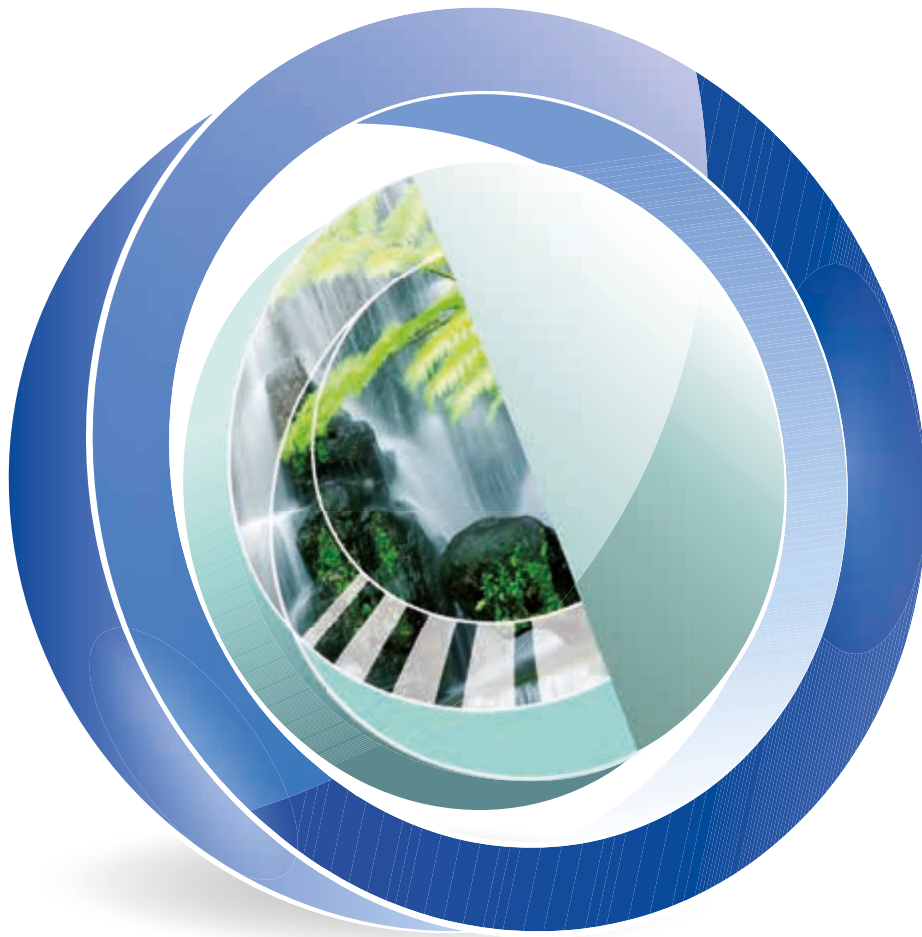


Highlights 2018

Edition 1/2018



Urology

STORZ
KARL STORZ – ENDOSKOPE





A Revolution in Transurethral Treatment Concepts

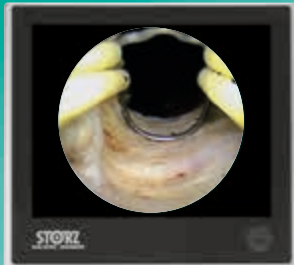
Complete system and diverse electrodes

The new bipolar concept from KARL STORZ sets new standards in terms of effectiveness, economic efficiency, patient safety and reliability and therefore revolutionizes the treatment of BPS and/or bladder tumors.

The system is supported by the new KARL STORZ HF Generator AUTOCON® III 400. The performance of bipolar applications has thus been further enhanced and optimized.

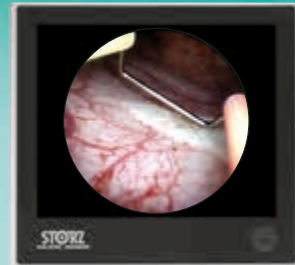
The KARL STORZ product portfolio includes loops for resection, incision, en-bloc resection as well as vaporization and enucleation electrodes for the prostate, bladder and urethra.

KARL STORZ provides a modern, adaptive morcellator system for enucleation that enables fast and efficient morcellation or the removal of prostate tissue from the bladder.



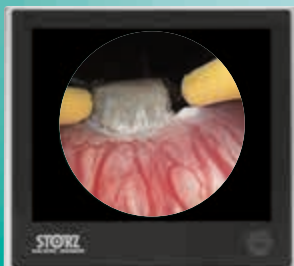
Bipolar Standard TUR-P

e.g. prostate 30-80 ml
Standard procedure for prostate resection



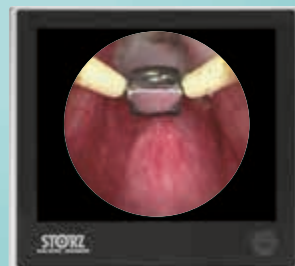
Bipolar En-Bloc Resection

Enhanced TUR-B
Thanks to new bipolar loops



Bipolar Vaporization

e.g. prostate < 30 ml
Cost-efficient alternative to laser vaporization



Bipolar Enucleation

e.g. prostate > 80/100 ml
Comparable efficiency to laser enucleation

Special features of the transurethral treatment concept

- Perfect symbiosis with HF surgery: Treatment, technology and economic efficiency
- All techniques can be performed with a bipolar working element by selecting the appropriate electrode
- Real bipolar system: No current backflow via the sheath
- Precise cutting and initial incision without delay: Automatic and optimized HF current regulation with the new AUTOCON® III 400 HF generator
- Maximum efficiency with minimal, controlled current flow
- Minimal tissue penetration; reduced obturator nerve stimulation
- A generator for all techniques: Bipolar vaporization, enucleation and standard TUR

HOPKINS® Telescopes

- 27005 BA **HOPKINS® Forward-Oblique Telescope 30°**, enlarged view, diameter 4 mm, length 30 cm, **autoclavable**, fiber optic light transmission incorporated, color code: red
- 27005 FA **HOPKINS® Telescope 12°**, enlarged view, diameter 4 mm, length 30 cm, **autoclavable**, fiber optic light transmission incorporated, color code: black

Working Elements

- 27040 EB **Working Element**, bipolar
Passive (cutting by means of a spring), movable thumb support. In rest position the electrode tip is inside the sheath.
- 27040 DB **Working Element**, bipolar
Active (cutting by means of a finger grip), movable thumb support. In rest position the electrode tip is outside the sheath.

Resectoscope Sheaths

- 27050 SCK **Resectoscope Sheath, quick-release lock**, including connecting tube for in- and outflow, 26 Fr., oblique beak, **rotating** inner sheath with ceramic insulation, color code: yellow
- 27040 BOK **Resectoscope Sheath, with LUER-Lock stopcock and obturator**, including connecting tube for inflow, 24 Fr., oblique beak, Obturator 27040 OC included in delivery, color code: yellow
- 27241 BOK **Resectoscope Sheath, with central valve and obturator**, including connecting tube for in- and outflow, 24 Fr., oblique beak, Obturator 27040 OC included in delivery, color code: yellow








Obturator

- 27040 OC **Standard Obturator**, for 24/26 Fr. Sheaths 27050 SCK, 27040 BOK, 27241 BOK

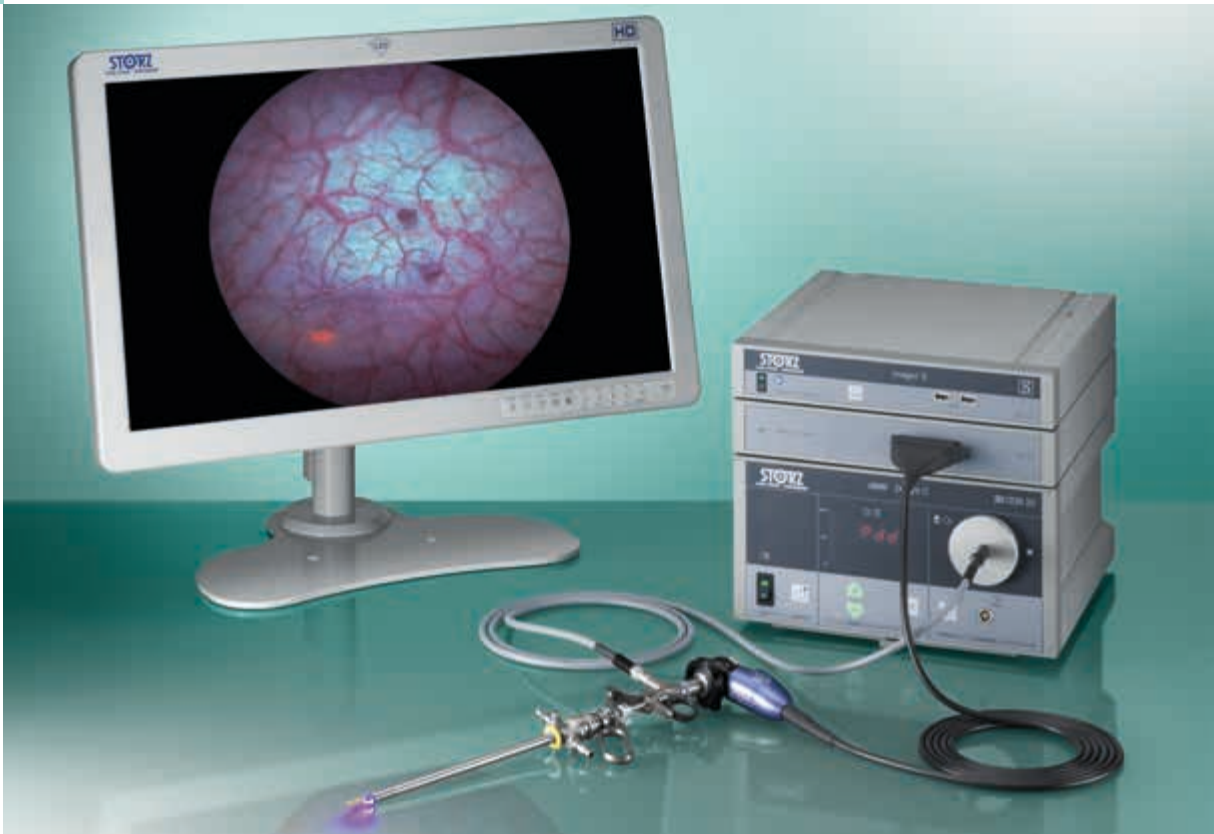
High Frequency Generator

- UH 400 **AUTOCON® III 400 High-End**, with KARL STORZ-SCB control NEO, power supply 220-240 VAC, 50/60 Hz, including mains cord
- UF 902 **Two-Pedal Footswitch**, with button for switchover function, for use with HF generators
- UH 801 **Bipolar High Frequency Cord**, length 400 cm, for KARL STORZ AUTOCON® III 400 SCB, for use with KARL STORZ bipolar resectoscopes

Bipolar Electrodes

24/26 Fr. Electrodes, for use with HOPKINS® Telescopes 27005 BA/FA	Size and Color Code	Electrodes – reusable (package of 6)	Electrodes – for single use (package of 10) 
Cutting Loop for TUR-P			
	diameter 0.35 mm color code: yellow	27040 GP1	011160-10*
Cutting Loop for TUR-B			
	diameter 0.30 mm color code: yellow/orange	27040 GP130	011165-10*
	diameter 0.30 mm color code: yellow/orange	27040 JB130	011167-10*
	diameter 0.30 mm color code: yellow/orange	27040 JBE130	011166-10*
Vaporization Electrode HALF MOON®			
	diameter 0.35 mm color code: yellow	27040 NB	011156-10*
Enucleation Electrode			
	diameter 0.35 mm color code: yellow	27040 VE	011169-10*





Stop Guessing. Start Knowing. PDD – Flexibility in Visualization with IMAGE1 S™

From diagnosis through to the treatment and aftercare of urinary bladder carcinoma, KARL STORZ offers a complete solution that is perfectly tailored to your needs. The new generation of HX-FI camera heads now allows you to perform Photodynamic Diagnosis (PDD) in FULL HD. This technology provides brilliant and high-resolution images in both white light and PDD mode.

In contrast to competitors, KARL STORZ offers OPAL1® technology for PDD as well as the functions of the S-Technologies CHROMA (contrast enhancement) and SPECTRA* (spectral color shift) in a single system.

- Brilliant, razor-sharp FULL HD imaging
- Flexibility in visualization with PDD fluorescence imaging and S-Technologies
- Straightforward use of the PDD functionality via the IMAGE1 S™ camera platform

* SPECTRA: Not available for sale in the U.S.

PDD System Components

- TH 112 **IMAGE1 S™ HX FI One-Chip FULL HD Camera Head**, S-Technologies (CHROMA, SPECTRA A and B**) available, OPAL1® technologies (PDD) in combination with light source D-LIGHT C or D-LIGHT C/AF, fixed focus, progressive scan, soakable, gas- and plasma-sterilizable, focal length f = 16 mm, 2 freely programmable camera head buttons, for use with IMAGE1 S™ (X-LINK)
- TH 113 **IMAGE1 S™ HX FI One-Chip FULL HD Pendulum Camera Head**, S-Technologies (CHROMA, SPECTRA A and B) available, OPAL1® technologies (PDD) in combination with light source D-LIGHT C or D-LIGHT C/AF, fixed focus, progressive scan, soakable, gas- and plasma-sterilizable, focal length f = 16 mm, 2 freely programmable camera head buttons, for use with IMAGE1 S™ (X-LINK)
- TC 200EN*** **IMAGE1 S CONNECT™**, connect module, for use with up to 3 link modules, resolution 1920 x 1080 pixels, with integrated KARL STORZ-SCB and digital Image Processing Module, power supply 100-120 VAC/200-240 VAC, 50/60 Hz
- TC 301 **IMAGE1 S™ X-LINK**, link module, for use with flexible video endoscopes and one-chip camera heads (up to FULL HD), power supply 100-120 VAC/200-240 VAC, 50/60 Hz
- 27005 BIA **HOPKINS® Forward-Oblique Telescope 30°**, enlarged view, diameter 4 mm, **autoclavable**, for photodynamic diagnosis (PDD), fiber optic light transmission incorporated, special filter, color code: red
- 27005 FIA **HOPKINS® Telescope 12°**, enlarged view, diameter 4 mm, **autoclavable**, for photodynamic diagnosis (PDD), fiber optic light transmission incorporated, special filter, color code: black
- 20 133601-1 **Cold Light Fountain D-LIGHT C SCB**, with integrated KARL STORZ-SCB, high-performance light unit for photodynamic diagnosis (PDD) ALA URO/ALA NEURO/Hypericine and for standard endoscopic diagnosis, including a 300 Watt Xenon bulb and KARL STORZ light cable connection, power supply 100-125/220-240 VAC, 50/60 Hz
- 495 FS **Fluid Light Cable**, diameter 2 mm, length 220 cm

** SPECTRA A and B: Not available for sale in the U.S.

***Also available in the following languages: DE, ES, FR, IT, PT, RU

Compatible working elements, sheaths and electrodes can be found on pages 4 and 5.



Digital Video Cysto-Urethrosopes from KARL STORZ – Precision in Diagnostics and Follow-up Care

- **Economical & mobile:**

The C-VIEW® video cystoscope with CMOS chip technology offers a particularly economical entry into digital imaging technology. Together with the portable C-MAC® monitor, the space-saving all-in-one system with integrated LED illumination and documentation function is excellent for cross-specialty, mobile patient treatment.

- **Premium & universal:**

The KARL STORZ video cysto-urethroscope with high-resolution CCD chip technology, in conjunction with the IMAGE1 S™ camera platform, delivers excellent image quality and sets new standards in the fields of diagnostics and follow-up care. For fluorescence diagnostics, the PDD system opens new dimensions for the early detection of bladder carcinomas.

Flexible Cysto-Urethroscopes

- 11272 VK **CMOS Video Cysto-Urethroscope**, C-VIEW® KIT, steerable, working channel inner diameter 6.5 Fr., direction of view 0°, angle of view 120°, sheath size 16 Fr., working length 37 cm
- 11272 VPK **Video Cysto-Urethroscope**, PAL, deflection of distal tip 210°/140°, direction of view 0°, angle of view 120°, working channel inner diameter 6.5 Fr., sheath size 16 Fr., working length 37 cm
- 11272 VPIK **Video Cysto-Urethroscope**, PAL, for photodynamic diagnosis (PDD), with integrated suction unit, deflection of distal tip 210°/140°, direction of view 0°, angle of view 120°, working channel inner diameter 6.5 Fr., sheath size 16 Fr., working length 37 cm

The following accessories are included in delivery:

Case

Grasping Forceps

Biopsy Forceps

Pressure Compensation Cap

Leakage Tester

Cleaning Brush

LUER-Adaptor

Irrigation Tube for Cleaning

Video Connecting Cable (for video cysto-urethroscopes only)

Imaging Systems

for use with the mobile video cystoscope with CMOS-chip technology, **C-VIEW®**

8403 ZXK



C-MAC® Monitor for CMOS Endoscopes, screen size 7" with 1280 x 800 pixel resolution, two camera inputs, a USB and a HDMI port, optimized user interface, video and image capture in real time on SD card, playback of recorded video clips and still images, data transfer from SD card to USB flash drive possible, splash-proof according to IP54, suitable for wipe disinfection, shock-resistant ABS plastic housing, intelligent power management with rechargeable Li-Ion batteries, VESA 75 mounting option, power adaptor for EU, UK, USA and Australia, power supply 110-240 VAC, 50/60 Hz, for use with CMOS video endoscopes including:

SD Card ULTRA, 8 GB
Protection Cap
VESA 75 Quick Clip
Mains Adaptor Set

For use with the video cysto-urethroscope with CCD-chip technology

TC 200EN



IMAGE1 S CONNECT™, connect module, for use with up to 3 link modules, resolution 1920 x 1080 pixels, with integrated KARL STORZ-SCB and digital Image Processing Module, power supply 100-120 VAC/200-240 VAC, 50/60 Hz including:

Mains Cord, length 300 cm
DVI-D Connecting Cable, length 300 cm
SCB Connecting Cable, length 100 cm
USB Flash Drive, 32 GB
USB Silicone Keyboard, with touchpad, US

TC 301



IMAGE1 S™ X-LINK, link module, for use with flexible video endoscopes and one-chip camera heads (up to FULL HD), power supply 100-120 VAC/200-240 VAC, 50/60 Hz, for use with IMAGE1 S CONNECT™ TC 200 including:


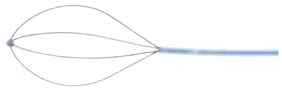


Mains Cord, length 300 cm
Link Cable, length 20 cm

TL 300



Cold Light Fountain POWER LED 300 SCB, with integrated KARL STORZ-SCB, high-performance LED module and one KARL STORZ light outlet, power supply 100-240 VAC, 50/60 Hz including:
Mains Cord

Optional Accessories

		Reusable	For single use 
	Stone Basket , nitinol, STERILE without tip, straight, 3 Fr., length 70 cm, 4 wires, basket diameter 12 mm, sterile, for single use	–	27023 KF
	Coagulation Electrode , unipolar, 4 Fr., length 73 cm	27723 T	–
	Seal , for Instrument Ports 27001 G/GF/GH/GP, LUER-Adaptor 27014 Y and 26252 BS/BL, package of 10, single use recommended	–	27550 N

Further monitors, light sources as well as camera control units can be found in the Urology catalog.



A New Generation of Pressure-Controlled PCNL Systems

The revolutionary MIP system ensures atraumatic and effective stone treatment with fewer complications for all stone sizes.

- Innovative pressure management: All systems from the MIP series are designed as open systems
- Efficient stone retrieval: The “vacuum cleaner” hydrodynamic effect makes it possible to retrieve stones without forceps, graspers or stone baskets
- One-step dilation: Following a skin incision, the access tract is dilated in a single step
- Versatility: The right instrument is available for any kidney stone location and size
- Innovative applicator for direct closure and contrast agent injection: Access tracts to the kidney can be directly closed after stone retrieval using a gelatin-thrombin matrix applied with the aid of an applicator. In addition, the applicator can be used to inject contrast agent
- Application-oriented sheaths: For standard and supine techniques as well as pediatric interventions

MIP M Set

27830 KAK **Nephroscope for MIP M**, with angled eyepiece, 12 Fr., 12°, length 22 cm, **autoclavable**, 1 working channel 6.7 Fr. for instruments up to 5 Fr., fiber optic light transmission incorporated, for use with Operating Sheaths 27830 BA/BB/BC/BAS/BBS/BCS

The following accessories are included in delivery:

Insertion Aid

Instrument Port with Sealing System and Quick Release Lock

LUER-Lock Tube Connector, male

LUER-Lock Tube Connector, with stopcock

Seal, package of 10

Wire Tray

27830 BB **Operating Sheath**, 16.5/17.5 Fr., working length 15 cm, for continuous irrigation and suction, for use with Nephroscope for MIP M 27830 KA, One Step Dilator 27830 AB and Applicator 27830 CF

27830 BBS **Operating Sheath**, for the supine position, 16.5/17.5 Fr., working length 18 cm, for continuous irrigation and suction, for use with Nephroscope for MIP M 27830 KA, One Step Dilator 27830 AB and Applicator 27830 CFS

27830 BK **Operating Sheath for Children**, 16.5/17.5 Fr., working length 7.5 cm, for continuous irrigation and suction, for use with Nephroscope for MIP M 27830 KA and One Step Dilator 27830 AB

27830 AB **One Step Dilator**, with central channel and a second eccentric channel for guide wires, for use with 16.5/17.5 Fr. Operating Sheaths 27830 BB/BBS

27830 CF **Applicator for Sealant**, including sheath and rod, for use with Operating Sheaths 27830 BA/BB/BC

27830 CFS **Applicator**, for the supine position, including sheath and rod, for use with Operating Sheaths 27830 BAS/BBS/BCS

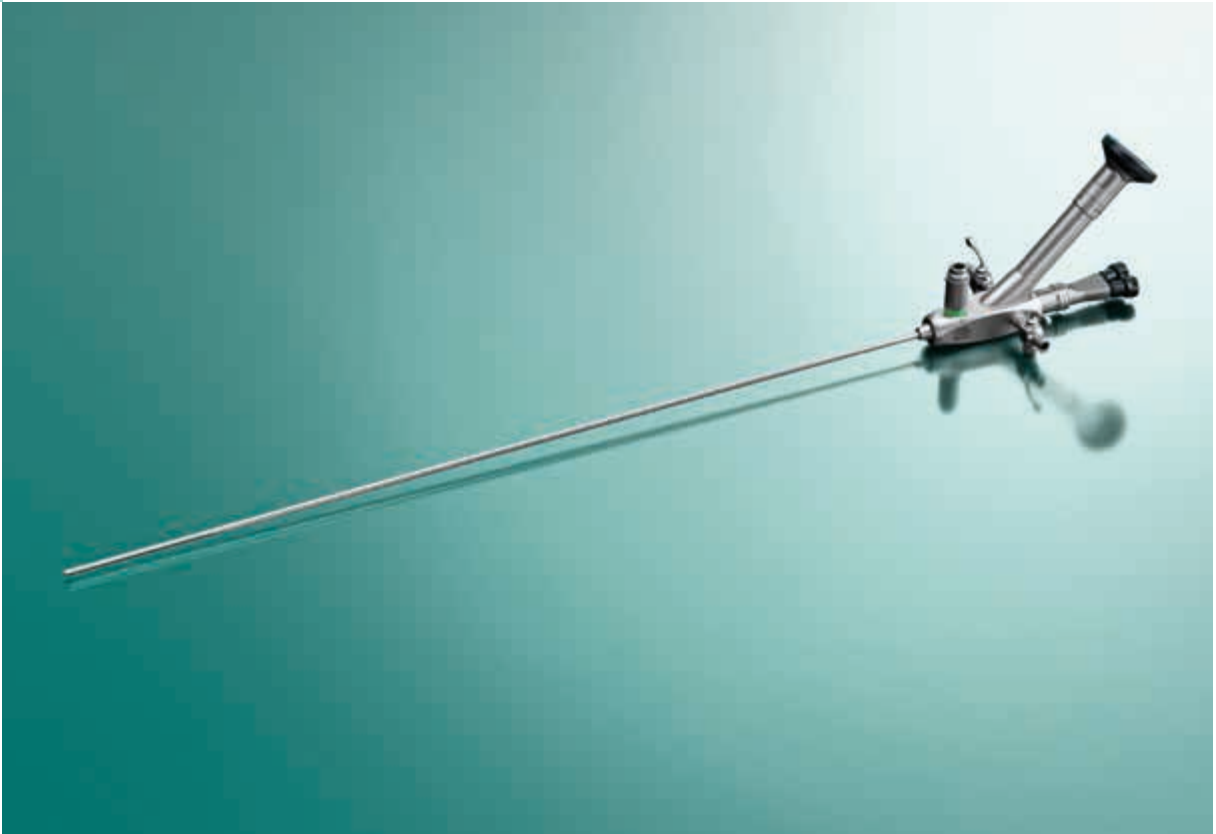
MIP XS/S – Percutaneous Nephroscope

27820 KAK **Nephroscope for MIP XS/S**, with angled eyepiece, 7.5 Fr., 6°, length 24 cm, **autoclavable**, 1 working channel 2 Fr., 1 irrigation channel 3 Fr., fiber optic light transmission incorporated, for use with Operating Sheaths 27820 BA/BB/BAS/BBS

MIP L – Percutaneous Nephroscope

27840 KAK **Nephroscope for MIP L**, with angled eyepiece, 19.5 Fr., HOPKINS® rod lens system 12°, length 22 cm, **autoclavable**, 12.4 Fr. working channel for use with instruments up to 11.5 Fr., fiber optic light transmission incorporated, for use with Operating Sheaths 27840 BA/BB/BAS/BBS and Instrument Port 27840 GP

Further dilators, sheaths and applicators as well as accessories can be found in the Urology catalog.



We Realize Innovations – The Thin Uretero-Renoscope from KARL STORZ

With a new generation of uretero-renoscopes, KARL STORZ presents a future-oriented advancement in a new design. The even more slender sheath shape provides the instruments with excellent balance and ensures comfort and ergonomics. A much smoother tapered step ensures excellent gliding properties and allows the surgeon to treat patients easily and gently.

- Minimal sheath circumference
- Sheath with very smooth, long tapered step
- Excellent gliding properties for the highest patient comfort
- Large working channel for maximum irrigation performance
- Excellent view
- Atraumatic sheath end for easy insertion into the ureter

Rigid Uretero-Renoscope

27000 LK **Uretero-Renoscope**, 7 Fr., 6°, length 43 cm, **autoclavable**, with angled eyepiece, fiber optic light transmission incorporated, 2 lateral irrigation ports and 1 working channel 4.8 Fr., for use with instruments up to 4 Fr.

The following accessories are included in delivery:

Insertion Aid

Instrument Port with Sealing System and Quick Release Lock

LUER-Lock Tube Connector, male


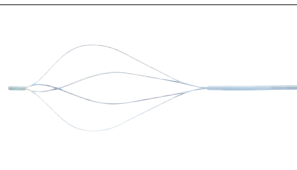
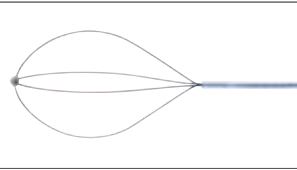
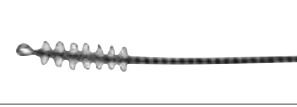
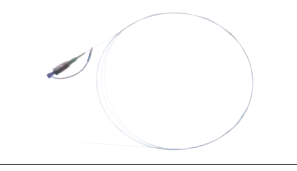
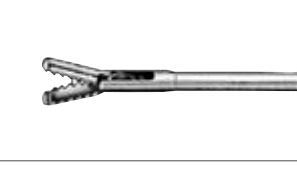

LUER-Lock Tube Connector, with stopcock

Seal, package of 10

Flow Control Stopcock

Wire Tray

Optional Accessories

		Reusable	For single use 
	Stone Basket , nitinol, STERILE with tip, helical, 2.5 Fr., length 120 cm, 4 wires, basket diameter 16 mm, package of 1	–	27023 TD
	Stone Basket , nitinol, STERILE without tip, straight, 2.5 Fr., length 120 cm, 4 wires, basket diameter 16 mm, package of 3	–	27023 LD
	Cytology Brush , 3 Fr., unsterile, package of 5	–	27023 Y
	CALCULASE II Fiber , STERILE 230 µm, length 300 cm, package of 6, for use with CALCULASE II	27 7502 71-P6	27 7502 77-P6
	Forceps , rigid, for grasping stone fragments, double action jaws, 4 Fr., length 60 cm, color code: blue	27424 F	–
	Biopsy Forceps , rigid, double action jaws, 4 Fr., length 60 cm, color code: blue	27424 Z	–

Further rigid uretero-renoscopes can be found in the Urology catalog.



As Every Detail Counts – Visibly Higher Resolution with the Flexible Uretero-Renoscopes FLEX-X^C and FLEX-X^{2S}

KARL STORZ presents a new generation of flexible uretero-renoscopes that enables you to benefit from proven properties such as minimal sheath circumference, excellent torque stability and maneuverability – now combined with a noticeably higher image resolution.

During the course of product development, it was possible to maximize the image quality of the FLEX-X^C video uretero-renaloscope, while the number of fibers for the FLEX-X^{2S} uretero-renaloscope could be doubled.

A wide range of optional accessories such as stone baskets, laser fibers and guide wires rounds off the product portfolio.

Video Uretero-Renaloscope FLEX-X^C:

- Now with 2.6x higher image resolution
- Larger, clearer images at high zoom levels
- Optimized visualization with S-Technologies

Uretero-Renal-Fiberscope FLEX-X^{2S}:

- Now with double fiber capacity
- True-to-detail image quality thanks to higher resolution






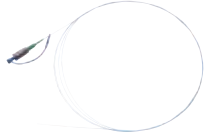

Flexible Uretero-Renoscopes

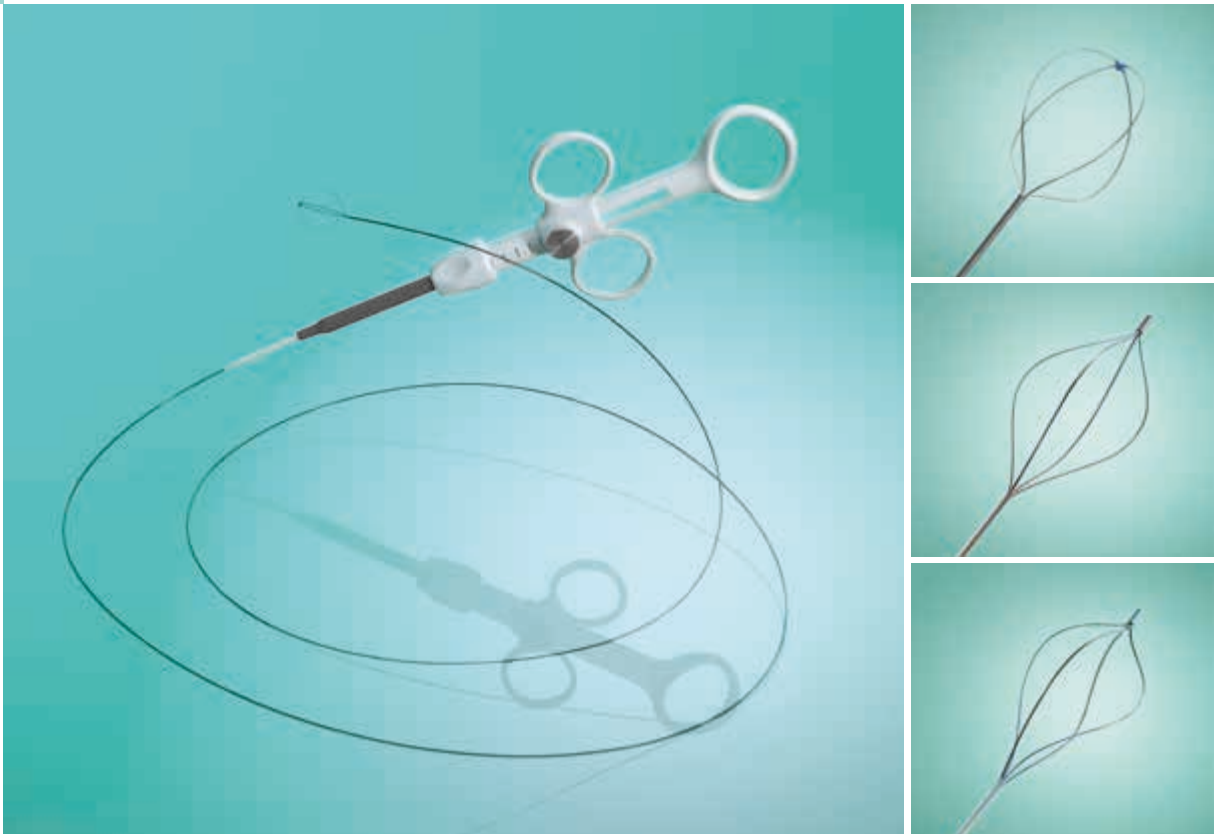
- 11278 VSK **Video Uretero-Renoscope FLEX-X^c, Set**, steerable, compatible with IMAGE1 S™, deflection of distal tip 270°/270°, direction of view 0°, angle of view 90°, working channel 3.6 Fr., sheath size 8.5 Fr., working length 70 cm
- 11278 AK1 **Uretero-Reno-Fiberscope FLEX-X^{2S}, Set**, steerable, deflection of distal tip 270°/270°, direction of view 0°, angle of view 88°, working channel inner diameter 3.6 Fr., sheath size 7.5 Fr., working length 67 cm, including 2x LUER-Lock tube connectors

The following accessories are included in delivery:

- Case**
- Pressure Compensation Cap**
- Leakage Tester**
- Cleaning Brush**
- LUER-Adaptor, with seal**

Optional Accessories

		Reusable	For single use 
	Fiber Fixation Kit , for the fixation of laser fibers in the working channels of flexible endoscopes up to diameter 1 mm including: Fiber Fixation Cleaning Adaptor Seal , package of 10	11014 YK	–
	Endoscopic Seal , STERILE for working channels of 3-7 Fr. instruments, package of 10	–	100010-10*
	Stone Basket , nitinol, STERILE without tip, straight, 1.9 Fr., length 120 cm, 4 wires, basket diameter 12 mm	–	27023 LB
	Guide Wire , 3 Fr., STERILE with ball end, package of 10	–	27025 P
	CALCULASE II Fiber , STERILE 230 µm, length 300 cm, package of 6, for use with CALCULASE II	27750271-P6	27750277-P6
	Cleaning Brush , length 90 cm, brush diameter 1.7 mm, unsterile, for single use, package of 50, for use with flexible endoscopes, with working channel diameters 1.2-1.5 mm	–	110930-50



KARL STORZ Single-use Stone Baskets

The ideal stone basket for each requirement

The numerous indications and methods of application in stone therapy require stone baskets with various properties – a challenge that KARL STORZ meets with its new product line of nitinol stone baskets. The highly flexible nitinol wires allow baskets to adapt very easily to difficult anatomies and are also gentle on the working channel of your instruments.

Nitinol stone baskets recommended for...

... rigid cystoscopy

Order no.	Size	Form	Wires	Working length
27023 TH	5 Fr.	with tip, straight	4	90 cm

... flexible cystoscopy and percutaneous nephrolithotomy

Order no.	Size	Form	Wires	Working length
27023 KF	3 Fr.	without tip, straight	4	70 cm

... semirigid uretero-rensoscopy

Order no.	Size	Form	Wires	Working length
27023 TD	2.5 Fr.	with tip, helical	4	120 cm
27023 LD	2.5 Fr.	without tip, straight	4	120 cm
27023 TF	3 Fr.	with tip, helical	4	120 cm
27023 LF	3 Fr.	without tip, straight	4	120 cm

... flexible uretero-rensoscopy

Order no.	Size	Form	Wires	Working length
27023 LB	1.9 Fr.	without tip, straight	4	120 cm



The New Trocar Generation from KARL STORZ

The new trocar generation combines single-use and reusable components. In line with the KARL STORZ company philosophy, the cannulas and trocars were designed with reusable components in mind. The valve seal is intended for single use.

Special Features:

- Ergonomic shape of the trocar ensures safe and comfortable handling during placement of the trocar
- One-piece sealing system for single use
- Minimal friction between the valve seal and the instrument
- Considerably reduced weight and good balance thanks to the newly designed plastic trocar housing
- Color coding for clear identification of different sizes
- Available in the sizes 2.5 mm – 13.5 mm

Size	2.5 mm	3.5 mm	
Working length	5 cm	5 cm	10 cm
Color code	blue	green	green
Trocar , with pyramidal tip including valve seal , for single use, package of 10	11603 GZS	30114 GZS	30114 GZG
Trocar , with blunt conical tip including valve seal , for single use, package of 10		30114 GNS	30114 GNG
Trocar , with conical tip including valve seal , for single use, package of 10		30114 GYS	30114 GYG

Size	6 mm		11 mm
Working length	5 cm	10 cm	10 cm
Color code	black	black	green
Trocar , with pyramidal tip including valve seal , for single use, package of 10	30160 GZS	30160 GZG	30103 GZG
Trocar , with blunt conical tip including valve seal , for single use, package of 10	30160 GNS	30160 GNG	30103 GNG
Trocar , with conical tip including valve seal , for single use, package of 10	30160 GYS	30160 GYG	30103 GYG

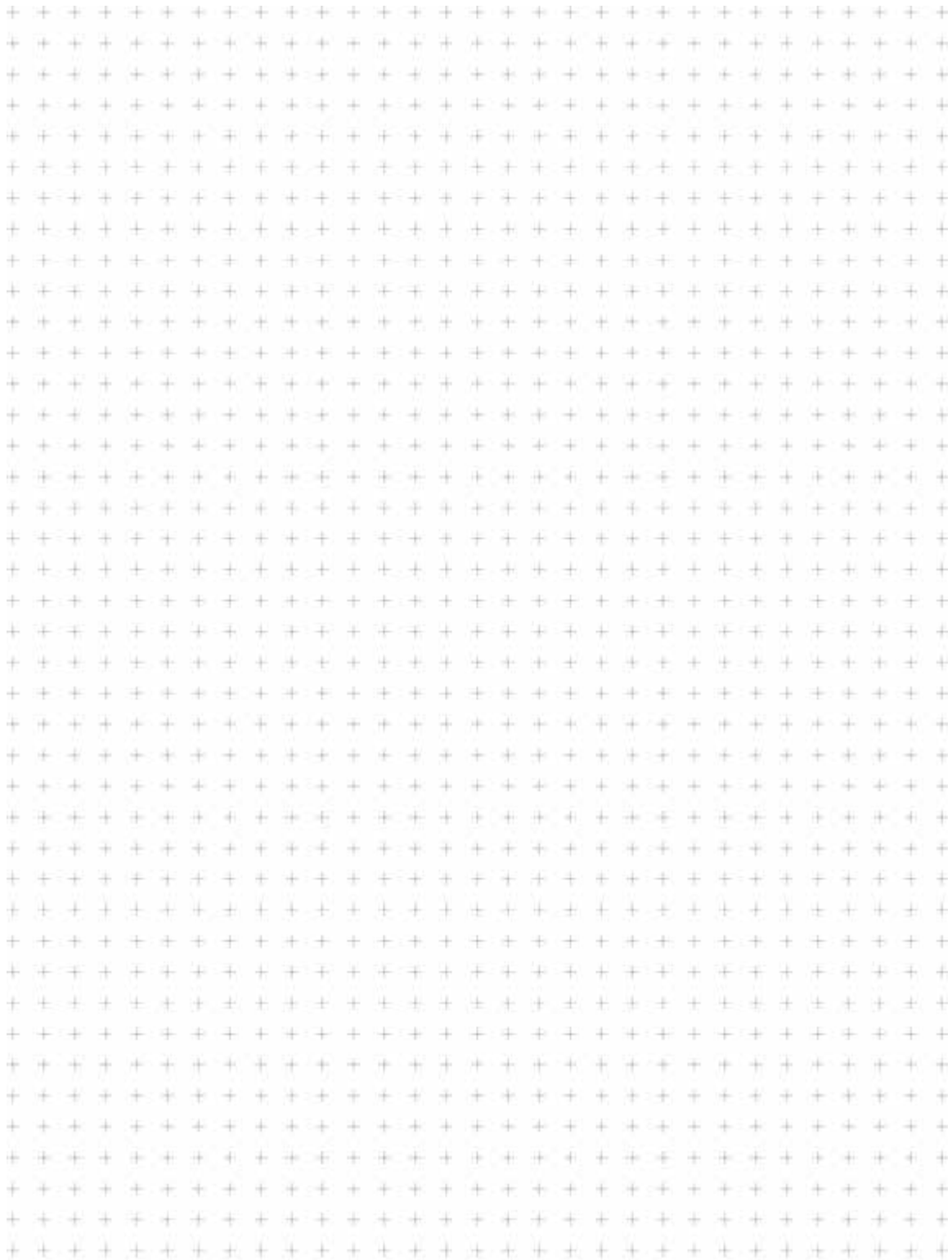
Size	13.5 mm
Working length	10 cm
Color code	blue
Trocar , with pyramidal tip including valve seal , for single use, package of 10	30108 GZG
Trocar , with blunt conical tip including valve seal , for single use, package of 10	30108 GNG
Trocar , with conical tip including valve seal , for single use, package of 10	30108 GYG

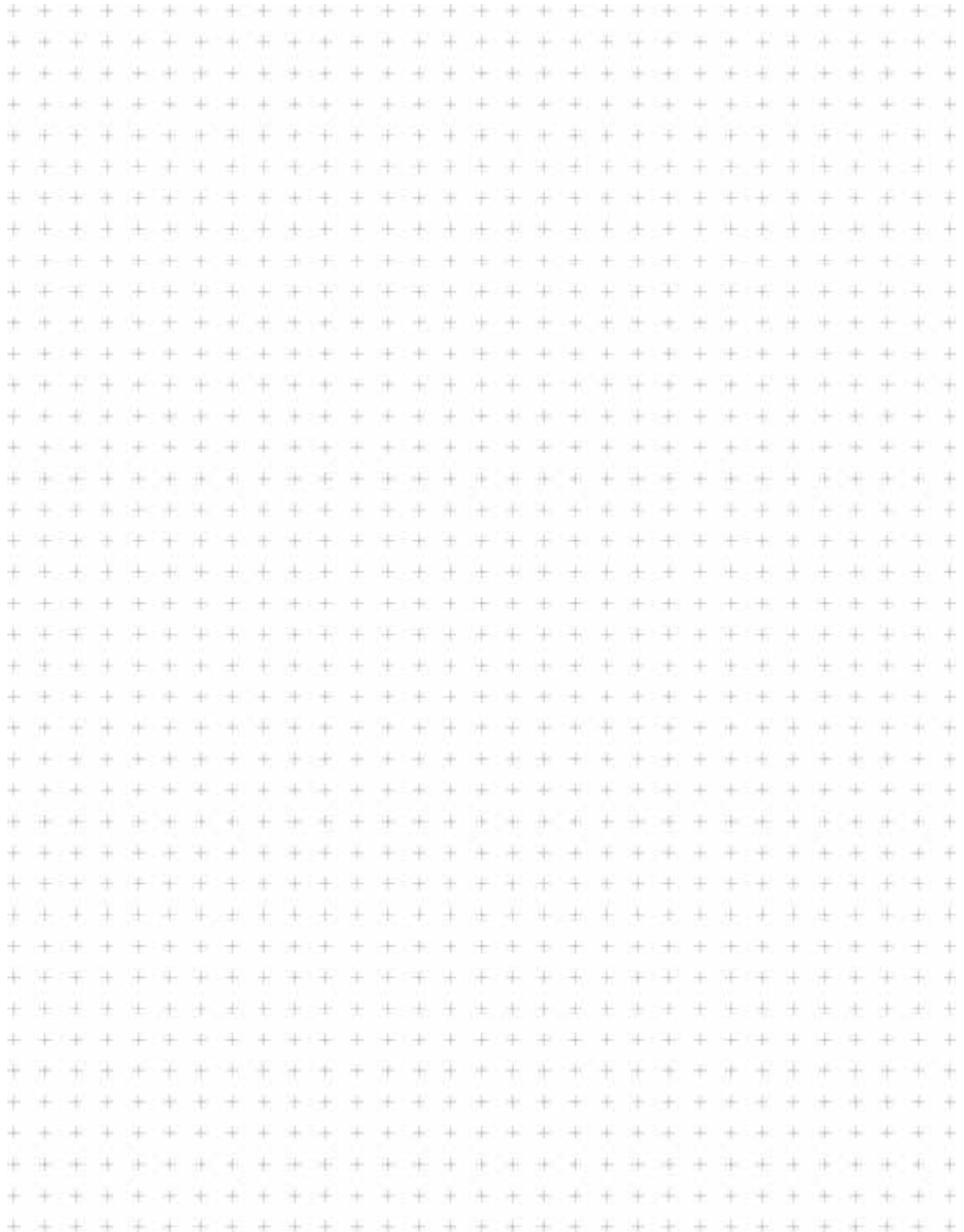
Valve Seals, for single use, package of 10

For trocars size 2.5 mm	11603-XV2
For trocars size 3.5 mm	30114-XV3
For trocars size 6 mm	30160-XV5
For trocars size 11 mm	30103-XV10
For trocars size 13.5 mm	30108-XV13

30141 RS **Reducer**, to reduce from 11 mm to 5 mm

30142 RS **Reducer**, to reduce from 13.5 mm to 5 mm





It is recommended to check the suitability of the product for the intended procedure prior to use.



STORZ
KARL STORZ—ENDOSKOPE

THE DIAMOND STANDARD



KARL STORZ SE & Co. KG
Dr.-Karl-Storz-Straße 34, 78532 Tuttlingen/Germany
Postbox 230, 78503 Tuttlingen/Germany
Phone: +49 (0)7461 708-0
Fax: +49 (0)7461 708-105
E-Mail: info@karlstorz.com
www.karlstorz.com