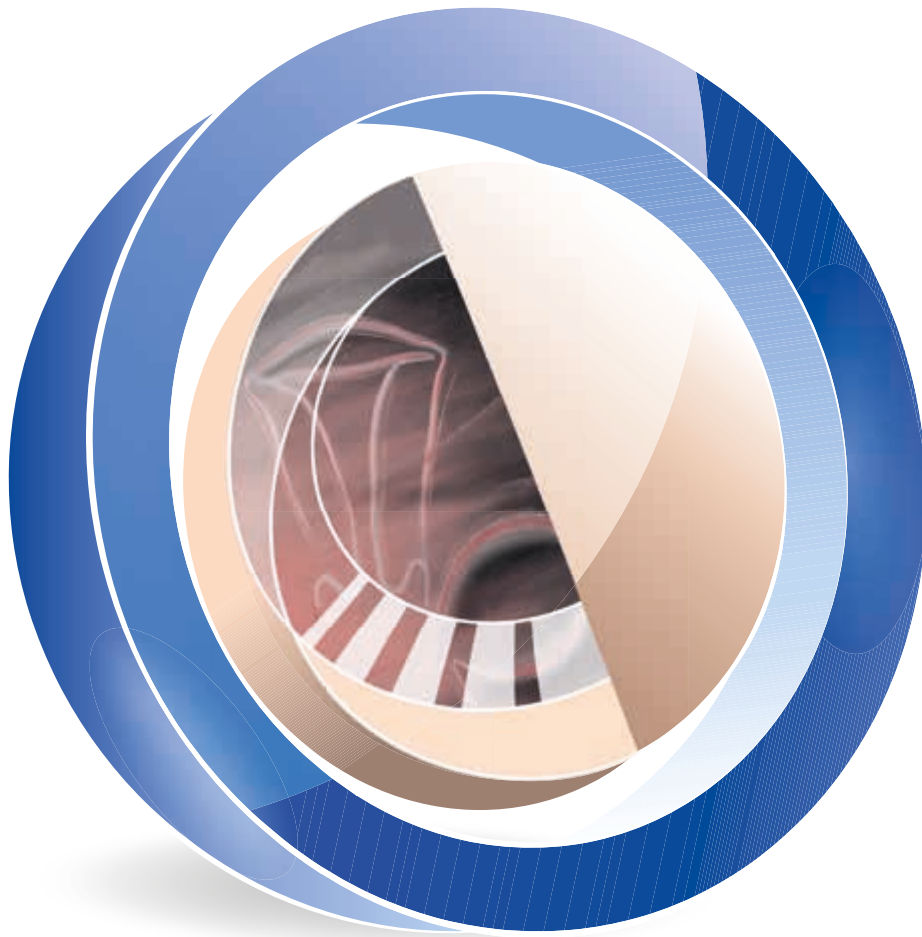


Highlights 2018

Edition 1/2018



Gynecology

STORZ
KARL STORZ – ENDOSKOPE





Creating Certainty: Diagnostics and Treatment Outside the OR

Solutions for office hysteroscopy

Hysteroscopy allows accurate diagnosis of any abnormalities in the uterine cavity while 5 Fr. instruments often make immediate treatment possible. Narrow-lumen hysteroscopes enable procedures to be performed outside the OR without anesthesia or dilation of the cervix. Furthermore, hysteroscopy can be used to rule out any obstacles to implantation prior to IVF treatment.

- The CAMPO TROPHYSCOPE® with a diameter of only 2.9 mm allows an atraumatic primary approach to the uterine cavity under visualization
- The irrigation function of the ENDOMAT® SELECT provides a better overview thanks to the constant maintenance of intracavitary pressure
- Outsourcing diagnostic services and minor hysteroscopic procedures extends the capacity of the OR to the clinical outpatient setting
- TELE PACK X LED combines a monitor, light source, camera control unit and data management in a single unit to provide a portable, mobile solution

Especially suitable for use in gynecological office settings and outpatient departments or IVF centers

- 26008 BAC **CAMPO TROPHYSCOPE®**, HOPKINS® telescope 30°, size 2.9 mm, length 24 cm, with irrigation connector, for use with Continuous-Flow Sheaths 26152 DA and 26152 DB
- 26152 DA **Continuous-Flow Examination Sheath**, size 3.7 mm, length 18 cm, with suction adaptor, for use with CAMPO TROPHYSCOPE® 26008 BAC
- 26152 DB **Continuous-Flow Operating Sheath**, size 4.4 mm, length 16 cm, with channel for semirigid instruments 5 Fr., with 1 stopcock and 1 LUER-Lock adaptor, for use with CAMPO TROPHYSCOPE® 26008 BAC
- 26152 DS **TROPHY Curette**, for use with Continuous-Flow Sheaths 26152 DA and 26152 DB

5 Fr. operating instruments for use with CAMPO TROPHYSCOPE®

- 26159 UHW **Biopsy and Grasping Forceps**, semirigid, double action jaws, 5 Fr., length 34 cm
- 26159 SHW **Scissors**, semirigid, pointed, single action jaws, 5 Fr., length 34 cm
- 26159 BE **Bipolar Dissection Electrode**, semirigid, 5 Fr., length 36 cm
- 26159 GC GORDTS/CAMPO **Bipolar Ball Electrode**, semirigid, 5 Fr., length 36 cm
- 26176 LE **Bipolar High Frequency Cord**, length 300 cm



26159 UHW

26159 SHW

26159 BE

26159 GC

- UP 210 **ENDOMAT® SELECT**, suction and irrigation pump, incl. mains cord, power supply 100-240 VAC, 50/60 Hz
- UP 602 **Hysteroscopy**, software, license, allows selection of the procedure “HYS”
- 031523-10* **Tubing Set**, irrigation, pressure-controlled, sterile, for single use, package of 10
- TP 100EN **TELE PACK X LED**
- 20212030 **TELECAM One-Chip Camera Head**, color system PAL



Information on further 5 Fr. operating instruments is available in the Gynecology catalog.



Resection to Perfection

The new bipolar 15 Fr. office resectoscope

In addition to bipolar resectoscopes with diameters of 22 and 26 Fr., KARL STORZ now offers a 15 Fr. resectoscope. Due to its small diameter, this resectoscope offers the possibility to perform resection outside the OR. Infertility patients or those suffering from abnormal bleeding can thus be treated in the doctor's office or clinical outpatient setting, even without anesthesia. Together with the AUTOCON® III 400 HF generator, effective resection, coagulation or vaporization is achieved.

- Minimal outer diameter
 - Possible to perform resection in the doctor's office or clinical outpatient setting, even without anesthesia
 - Little or even no dilation required (depending on the patient)
- Can be used as a diagnostic hysteroscope in conjunction with semirigid 5 Fr. instruments (optional)
- Real bipolar system with current not returned via the sheath
- Self-cleaning loops due to plasma formation

15 Fr. Bipolar Resectoscope

- 26120 AA **HOPKINS® Straight Forward Telescope 0°**, diameter 2.9 mm, length 30 cm, **autoclavable**
- 26053 SCK **Resectoscope Sheath**, 15 Fr., oblique beak, rotating inner sheath, color code: green
- 26053 OC **Standard Obturator**
- 26053 EBH **Working Element Set**, bipolar
- 011050-10* **Cutting Loop**, bipolar, 15 Fr., sterile, for single use, package of 10







- 26053 CD **Telescope Bridge**, with channel for semirigid 5 Fr. operating instruments, for use with Resectoscope Sheath 26053 SC



22 Fr. Bipolar Resectoscope, color code: white

- 26020 FA **HOPKINS® Telescope 12°**, diameter 2.9 mm, length 30 cm, **autoclavable**
- 26055 SCK **Resectoscope Sheath**, 22 Fr., oblique beak, rotating inner sheath
- 26055 CO **Standard Obturator**
- 26055 EBH **Working Element Set**, bipolar

	26055 GP1	Cutting Loop , bipolar
	26055 NB	Coagulation Electrode , bipolar, with ball end
	26055 BL1	Cutting Electrode , bipolar, pointed
	280	Protection Tube , for sterilization and storage of electrodes, loops, curettes and knives

AUTOCON® III 400

- UH 400 **AUTOCON® III 400 High-End**, power supply 220-240 VAC, 50/60 Hz, including mains cord
- HF connecting sockets unipolar:**
 2x 3-pin US type; 5 mm connector KARL STORZ/Erbe VIO
 2x 4 mm connector (via footswitch); BOVIE (via footswitch)
- bipolar:**
 2x 2-pin US type (28.58)
 3x KARL STORZ/Erbe VIO; neutral electrode 2-pole.



Further information on our 26 Fr. bipolar resectoscope is available in the Gynecology catalog.

**NEW**

Rapid Tissue Ablation with a Small Diameter

19 Fr. Intrauterine BIGATTI Shaver (IBS®) with HYSTEROMAT E.A.S.I.®

With an optical system that features an outer diameter of only 6 mm, the Intrauterine BIGATTI Shaver (IBS®) is inserted into the minimally dilated cervix. Thanks to the 4 mm shaver blade, the immediate removal of intrauterine pathologies is now possible outside the OR, e.g., in office settings and clinical outpatient departments or IVF centers.

- Mechanical removal of intrauterine pathologies such as polyps, myomas or placental remnants
- Immediate suction of the resected tissue via the HYSTEROMAT E.A.S.I.® provides a comfortable work environment without disturbing tissue chips in the uterine cavity
- HYSTEROMAT E.A.S.I.® can be used for all hysteroscopic interventions
- Less risk of complications as HF current is not used
- Fully reusable system

**Intrauterine BIGATTI Shaver (IBS®)
for use in office settings, clinical outpatient departments and IVF centers**

26208 AMK **HOPKINS® Wide Angle Straight Forward Telescope 6°, Set**, with parallel eyepiece, length 20 cm, 19 Fr., **autoclavable**, fiber optic light transmission incorporated with working channel, with LUER-Lock connection for inflow, color code: green-blue including:

**HOPKINS® Wide Angle Straight Forward Telescope 6°
Obturator**, for use with HOPKINS® Telescope 26208 AMA
LUER-Lock Tube Connector

26 7020 50 **DRILLCUT-X® II Shaver Handpiece GYN**, for use with UNIDRIVE® S III SCB

40 7120 90 **Handle**, adjustable, for use with DRILLCUT-X® II N shaver handpiece

26208 SA **Shaver Blade GYN**, straight, sterilizable, concave cutting edge, double serrated, oval cutting window, diameter 4 mm, length 32 cm, for use with DRILLCUT-X® II Handpiece 26 7020 50, color code: blue-green



26208 SB **Shaver Blade GYN**, straight, sterilizable, double serrated cutting edge, rectangular cutting window, diameter 4 mm, length 32 cm, for use with DRILLCUT-X® II Handpiece 26 7020 50, color code: blue-yellow



26208 SZ **Coagulation Electrode**, bipolar, for use with Intrauterine BIGATTI Shaver (IBS®)

26176 LE **Bipolar High Frequency Cord**, length 300 cm

26 701001-1 **UNIDRIVE® S III, GYN Set**, motor system, with KARL STORZ-SCB, power supply 100-120/230-240 VAC, 50/60 Hz including:

Mains Cord
One-Pedal Footswitch, two-stage, with proportional function and pump switch function
SCB Connecting Cable, length 100 cm

20 7010 70 **Control Cable**

26 340001-1 **HYSTEROMAT E.A.S.I.® SCB**, power supply 100-240 VAC, 50/60 Hz, HYSTEROMAT E.A.S.I.® SCB: SCB ready, compatible from RUI Release 45 including:

Mains Cord
SCB Connecting Cable
Basic Tubing Set*, for single use
(5x 031217-01 Tubing Set Suction / 5x 031717-01 Tubing Set Irrigation)





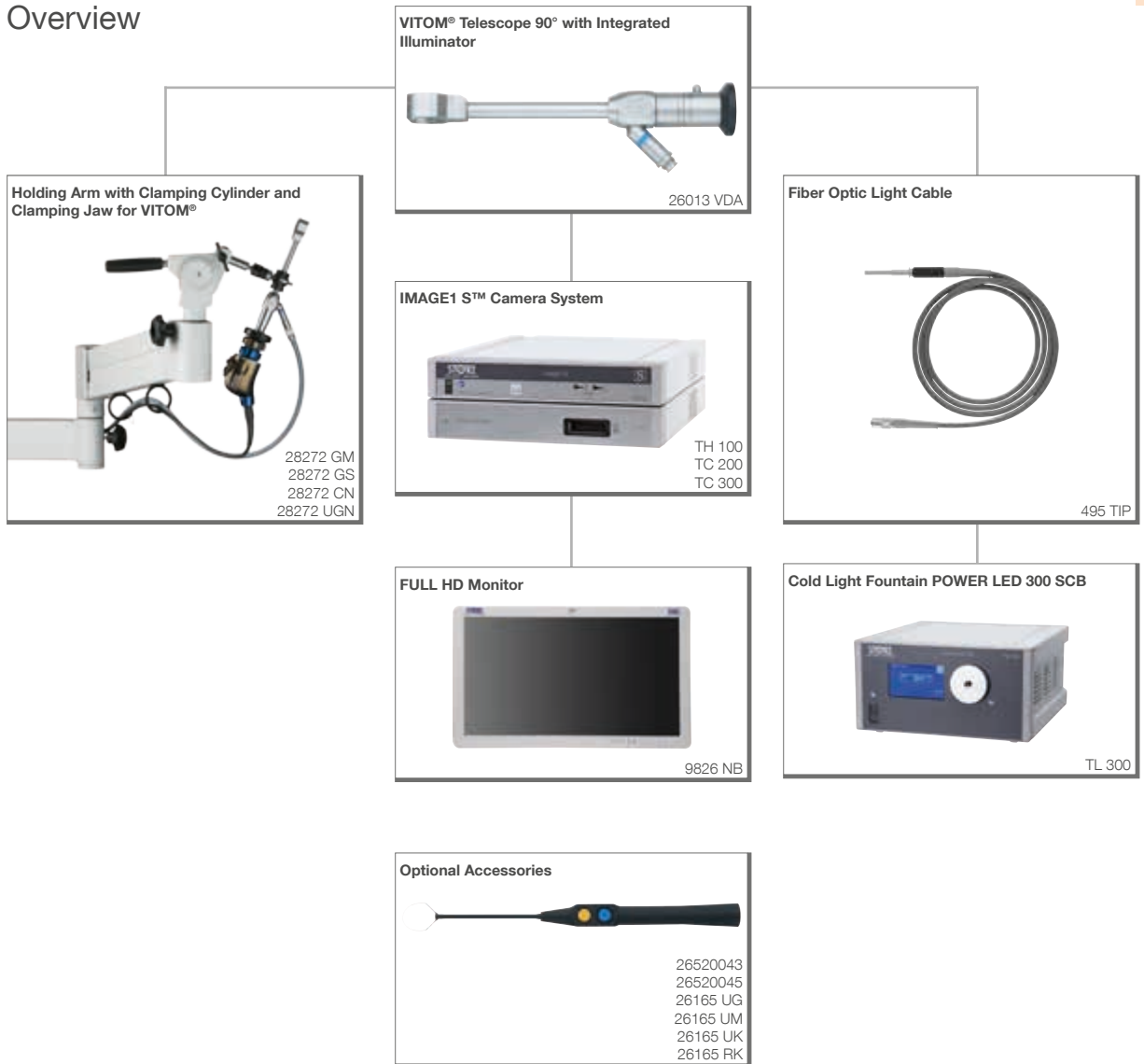
VITOM® – Visualization System for Gynecology

The VITOM® system provides excellent depth of field, optimal magnification, good contrast and excellent color reproduction, which are the ideal prerequisites for the best possible visualization of colposcopic findings, conizations and open surgical interventions. Furthermore, the VITOM® system magnifies the surgical site and provides an excellent view of the epithelial border, e.g., during loop excision.

- Magnified images during colposcopy or conization
- VITOM® system with integrated green filter
- Ideal for training, documentation or streaming of interventions
- Ergonomic work
- Enhanced light in the field of view due to the integrated illuminator
- Compact design requiring minimal space
- Compatible with the IMAGE1 S™ camera platform

Image source and further information on loop conization: "Primary, secondary and tertiary prevention of cervical cancer" - 2nd Edition, Prof. Dr. med. A. SCHNEIDER, M.P.H.

Overview





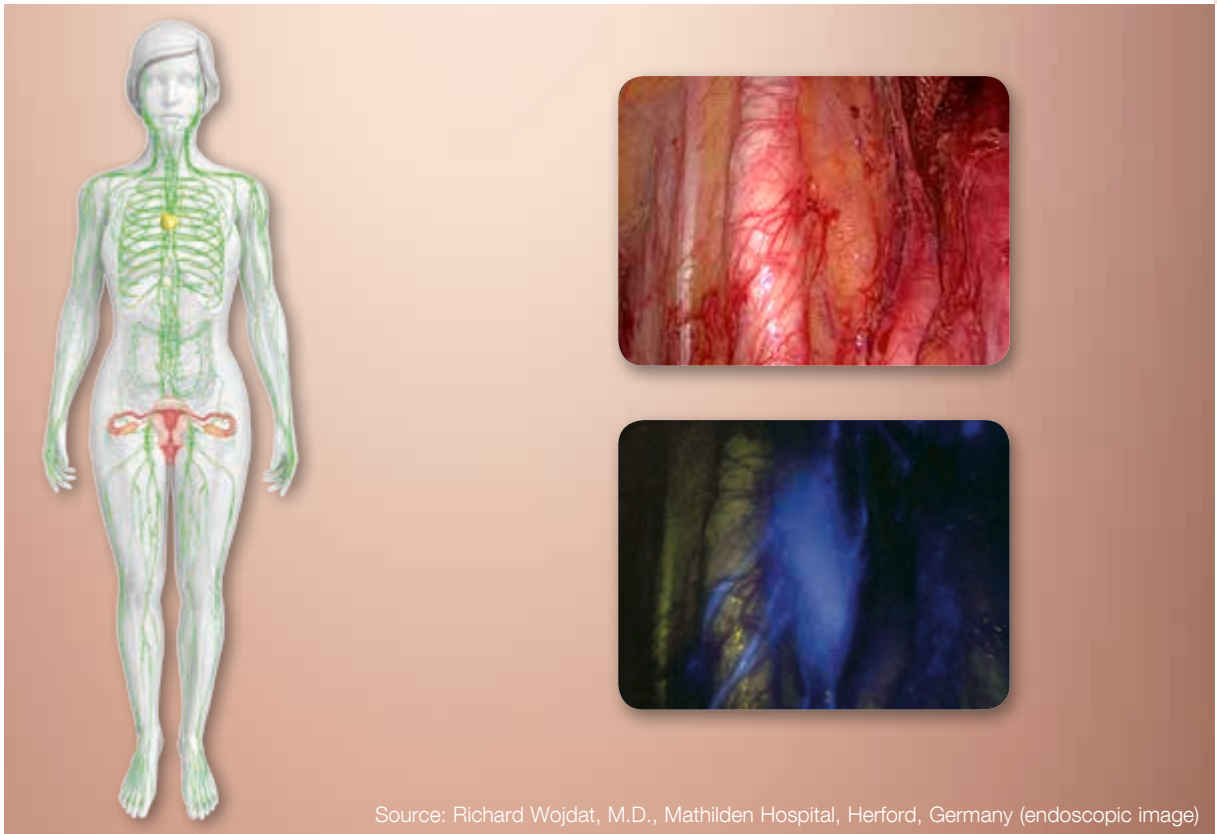
Source: Prof. Dr. med. Michael D. Mueller, Department of Gynecology, Inselspital Bern, Switzerland (endoscopic image)

Visualization of the Lymphatic System with ICG in Tumor Surgery*

The OPAL1® technology for the NIR/ICG system and the marker indocyanine green (ICG) enable non-radioactive visualization of the entire lymphatic system surrounding a tumor in real time, e.g., in a laparoscopic manner.

- Non-radioactive lymph node detection method
- Multidisciplinary use
- OPAL1® technology for the NIR/ICG system based on the IMAGE1 S™ camera platform
- Xenon-based technology (no laser safety measures necessary)
- Intuitive switchover between standard white light and fluorescence mode via footswitch
- Physicians describe their surgical experience with the system as follows: NIR/ICG technology reduces radical lymphadenectomy and, at the same time, visual control makes the en-bloc resection of lymph nodes easier.

* Approval status may vary. Please inform yourself in advance at your hospital or in your country.



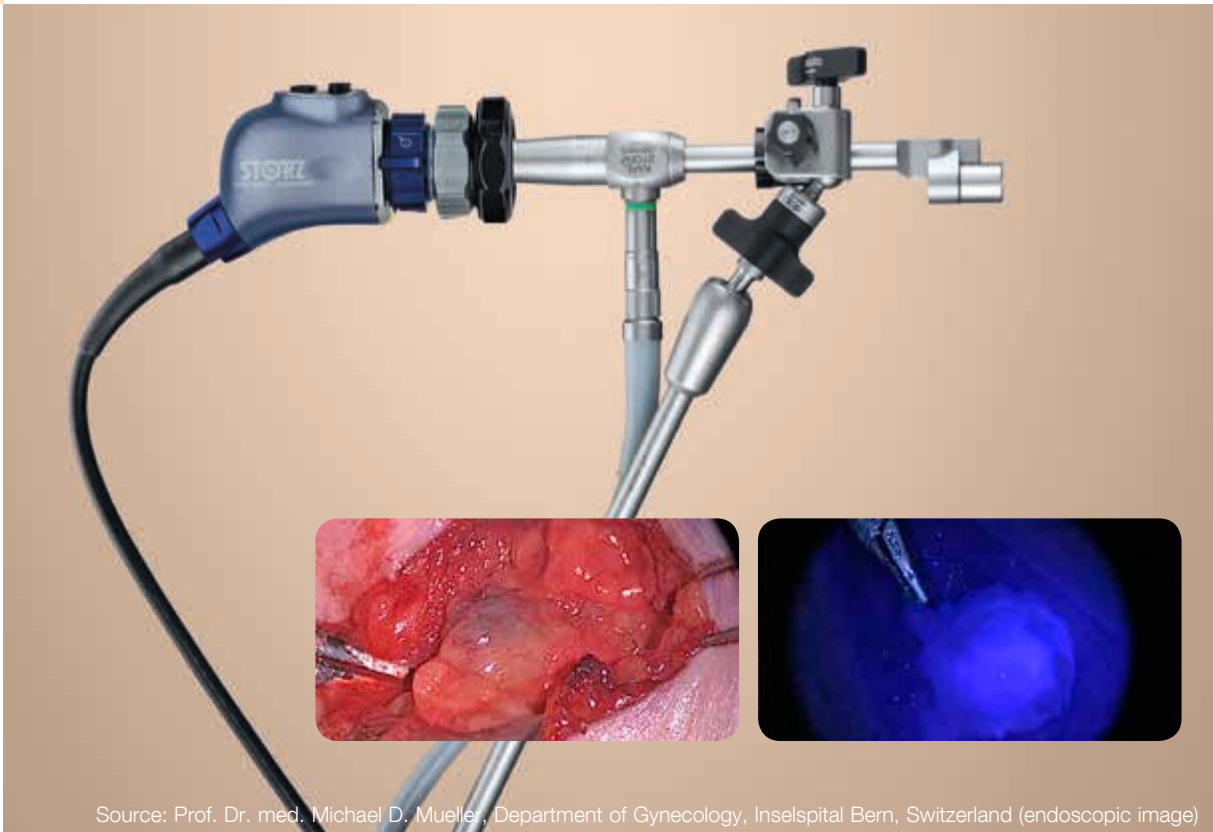
Laparoscopic Visualization of the Lymphatic System in Gynecology with the OPAL1® NIR/ICG Technology

In gynecology, the degree of tumor involvement in the sentinel lymph node (SLN) is of great importance as it provides medical information about the tumor stage and is thus one of the main prognostic factors. In breast cancer surgery, SLN detection with the radioactive tracer ^{99m}Tc is the gold standard. In other areas of gynecological tumor surgery, its benefits in comparison to elective lymph node dissection is the subject of discussion. As a new, non-radioactive imaging technique, NIR imaging with ICG can prove useful, e.g., in the case of vulvar, endometrial, cervical or mammary carcinoma.¹ Laparoscopic SLN mapping of endometrial carcinoma yielded the following results (radioactive tracer ^{99m}Tc vs. ICG):

	Radioactive Tracer ^{99m} Tc		ICG	
	Total SLN detection rate	Bilateral SLN	Total SLN detection rate	Bilateral SLN
Study 1 ²	83%	61%	95.5%	95.5%

¹ Papadia et al., Doctor-to-Doctor Manual ENDO-PRESS®, ICG-enhanced Fluorescence-guided SLN Mapping in Gynecological Malignancies (ISBN 978-3-89756-932-4)

² Imboden et al., Surg. Oncol. 2015



VITOM® II ICG – Fluorescence Imaging in Open Surgery

Use for vulvar carcinoma

The VITOM® II ICG system from KARL STORZ provides an optimal solution for the sentinel lymph node mapping in the case of vulvar carcinoma. VITOM® II ICG is an exoscope that combines the benefits of both endoscopy and microscopy. It is used with the same camera system that is employed in endoscopy (IMAGE1 S™ camera platform). The high-quality visualization under white light is, of course, also preserved with VITOM® ICG telescopes.

- NIR/ICG visualization with the VITOM® II ICG system – in addition to technetium and blue dye – offers the surgeon a straightforward method for the detection and selective removal of sentinel lymph nodes (SLN) in the case of vulvar carcinoma.
- Possibility for the integration of VITOM® II ICG by means of a holding arm into the gynecologist's operating field.

Camera System

CCU

Light Source

Camera Head

Light Cable

Endoscopes

VITOM®

**IMAGE1 S™
System**



IMAGE1 S CONNECT™
TC 200

ICG



IMAGE1 S™ H3-LINK
TC 300



D-LIGHT P/ 20 1337 01-1



IMAGE1 S™ H3-Z FI
TH 102



Fiber Optic Light Cable
495 NAC/NCSC/TIP/NCS/VIT



HOPKINS® Telescope
26003 ACA/BCA
26046 ACA/BCA



VITOM® II ICG
20916025 AGA
28272 CN/UGK/HC
28172 HM/HR



The New Trocar Generation from KARL STORZ

The new trocar generation combines single-use and reusable components. In line with the KARL STORZ company philosophy, the cannulas and trocars were designed with reusable components in mind. The valve seal is intended for single use.

Special Features:

- Ergonomic shape of the trocar ensures safe and comfortable handling during placement of the trocar
- One-piece sealing system for single use
- Minimal friction between the valve seal and the instrument
- Considerably reduced weight and good balance thanks to the newly designed plastic trocar housing
- Color coding for clear identification of different sizes
- Available in the sizes 2.5 mm – 13.5 mm

Size	2.5 mm	3.5 mm	
Working length	5 cm	5 cm	10 cm
Color code	blue	green	green
Trocar , with pyramidal tip including valve seal , for single use, package of 10	11603 GZS	30114 GZS	30114 GZG
Trocar , with blunt conical tip including valve seal , for single use, package of 10		30114 GNS	30114 GNG
Trocar , with conical tip including valve seal , for single use, package of 10		30114 GYS	30114 GYG

Size	6 mm		11 mm
Working length	5 cm	10 cm	10 cm
Color code	black	black	green
Trocar , with pyramidal tip including valve seal , for single use, package of 10	30160 GZS	30160 GZG	30103 GZG
Trocar , with blunt conical tip including valve seal , for single use, package of 10	30160 GNS	30160 GNG	30103 GNG
Trocar , with conical tip including valve seal , for single use, package of 10	30160 GYS	30160 GYG	30103 GYG

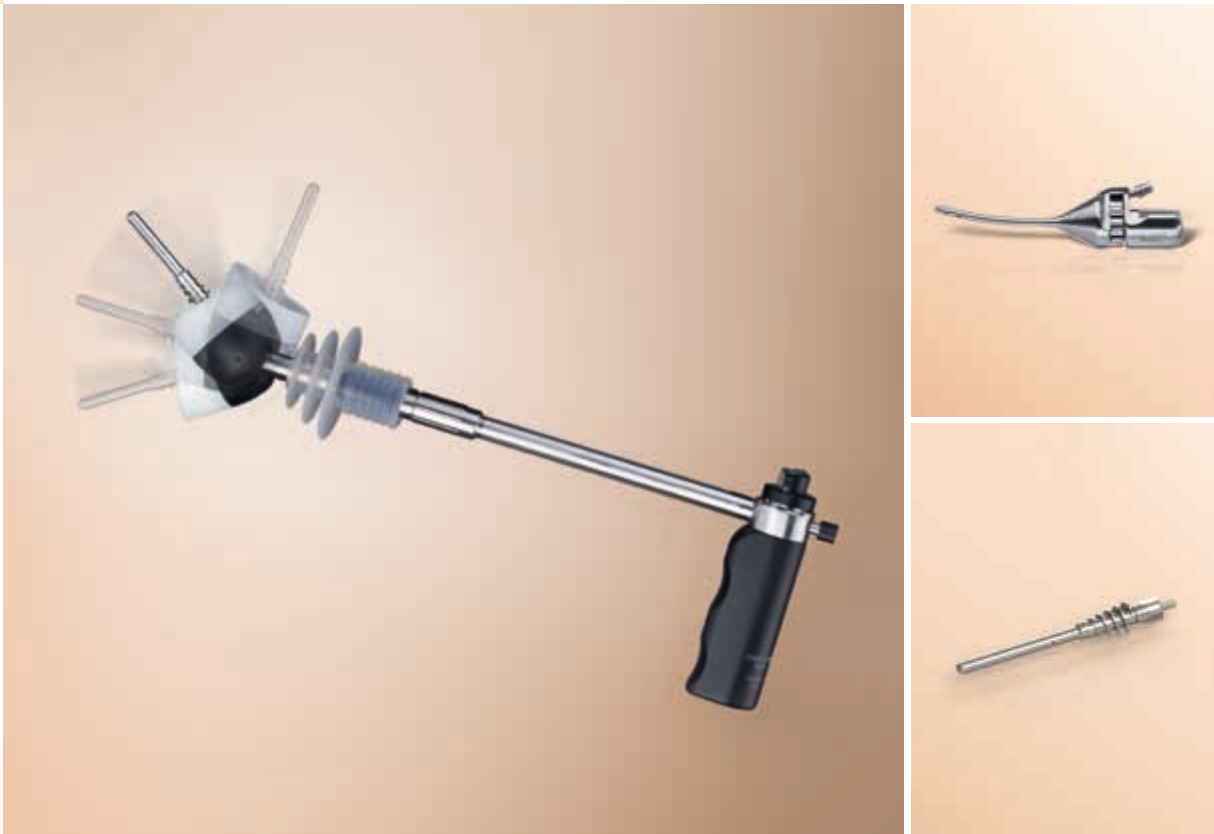
Size	13.5 mm
Working length	10 cm
Color code	blue
Trocar , with pyramidal tip including valve seal , for single use, package of 10	30108 GZG
Trocar , with blunt conical tip including valve seal , for single use, package of 10	30108 GNG
Trocar , with conical tip including valve seal , for single use, package of 10	30108 GYG

Valve Seals, for single use, package of 10

For trocars size 2.5 mm	11603-XV2
For trocars size 3.5 mm	30114-XV3
For trocars size 6 mm	30160-XV5
For trocars size 11 mm	30103-XV10
For trocars size 13.5 mm	30108-XV13

30141 RS **Reducer**, to reduce from 11 mm to 5 mm

30142 RS **Reducer**, to reduce from 13.5 mm to 5 mm



KECKSTEIN Uterine Manipulator

The versatile KECKSTEIN uterine manipulator makes gynecological surgery in the lower pelvis easier and safer. Presentation of the operative field during hysterectomy as well as organ-preserving surgery, e.g. in the case of endometriosis, is greatly enhanced in comparison to conventional manipulators thanks to the possibility of anteflexion and retroflexion of the distal tip and cap. Various configurable atraumatic inserts for interventions in reproductive medicine or oncology offer the operating surgeon completely new surgical possibilities.

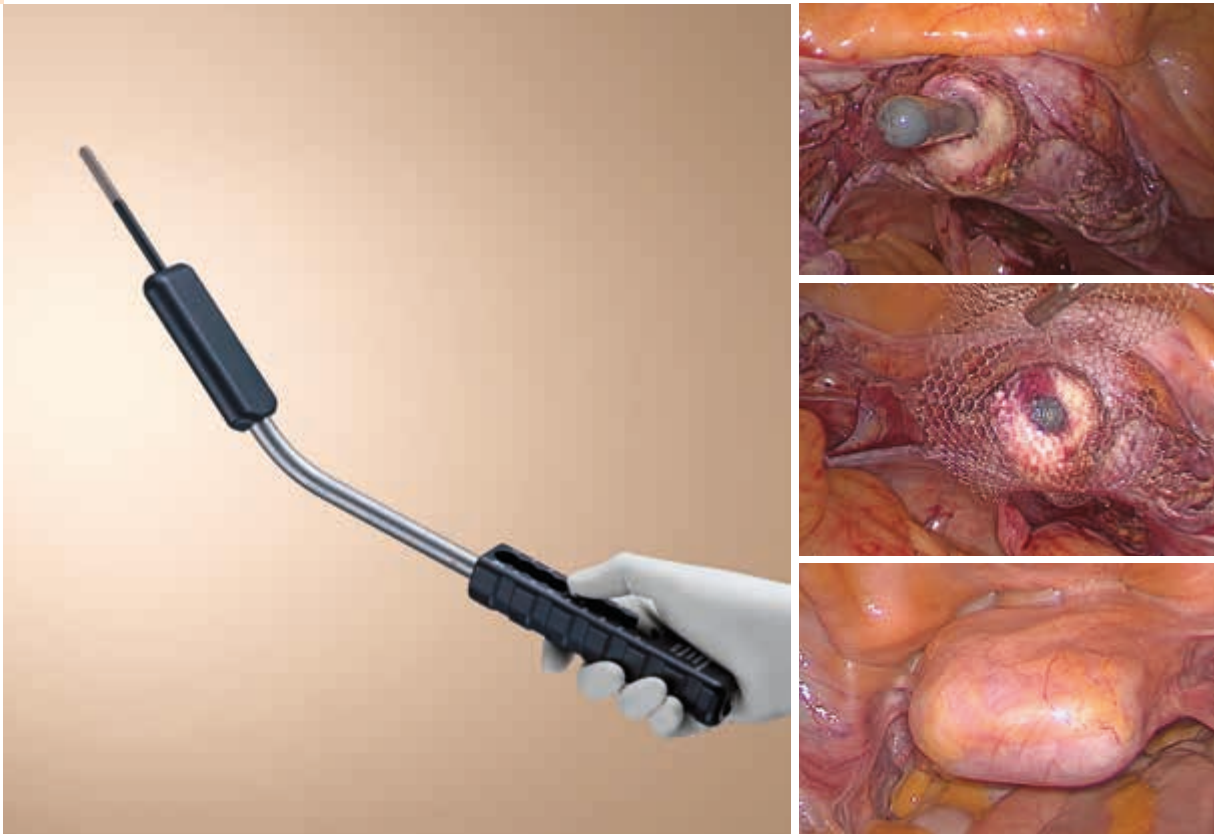
- Reusable seal for Total Laparoscopic Hysterectomy
- Anteflexion and retroflexion of the distal tip and the cap
- Atraumatic inserts for organ-preserving interventions and surgical oncology

- 26168 Z KECKSTEIN **Uterine Manipulator**, complete including:
- Handle**
 - Manipulator Sheath**
 - Cap**, diameter 37 mm, length 30 mm
 - Cap**, diameter 42 mm, length 30 mm
 - Spiral Insert**, diameter 15 mm
 - Spiral Insert**, diameter 20 mm
 - Working Insert**, diameter 6 mm, length 60 mm
 - Working Insert**, diameter 6 mm, length 40 mm
 - Seal**
 - Working Insert**, for chromopertubation, diameter 3 mm, length 30 mm
 - Working Insert**, atraumatic, diameter 5 mm, length 60 mm
 - Tenaculum Forceps**
 - Holder for Tenaculum Forceps**
 - Pertubation Tube**
 - 2x **LUER-Lock Connector**
 - Y-Tube Connector**
- 26168 ZT **Seal**, for use with the caps of KECKSTEIN Uterine Manipulator 26168 ZC/ZD/ZE

Optional accessories

- 26168 ZU **Cap**, diameter 28 mm, length 30 mm
- 26168 ZV **Cap**, diameter 32 mm, length 30 mm
- 26168 ZE **Cap**, diameter 47 mm, length 30 mm
- 26168 ZF **Spiral Insert**, diameter 12 mm
- 26168 ZK **Working Insert**, diameter 6 mm, length 80 mm
- 26168 ZS **Working Insert**, diameter 6 mm, length 30 mm
- 26168 ZN **Working Insert**, for chromopertubation, diameter 3 mm, length 50 mm
- 26168 ZO **Working Insert**, atraumatic, diameter 5 mm, length 40 mm
- 26168 ZR **Working Insert**, atraumatic, diameter 5 mm, length 90 mm

NEW
NEW

**NEW**

SCHÄR Manipulator

THE instrument for laparoscopic descensus surgery

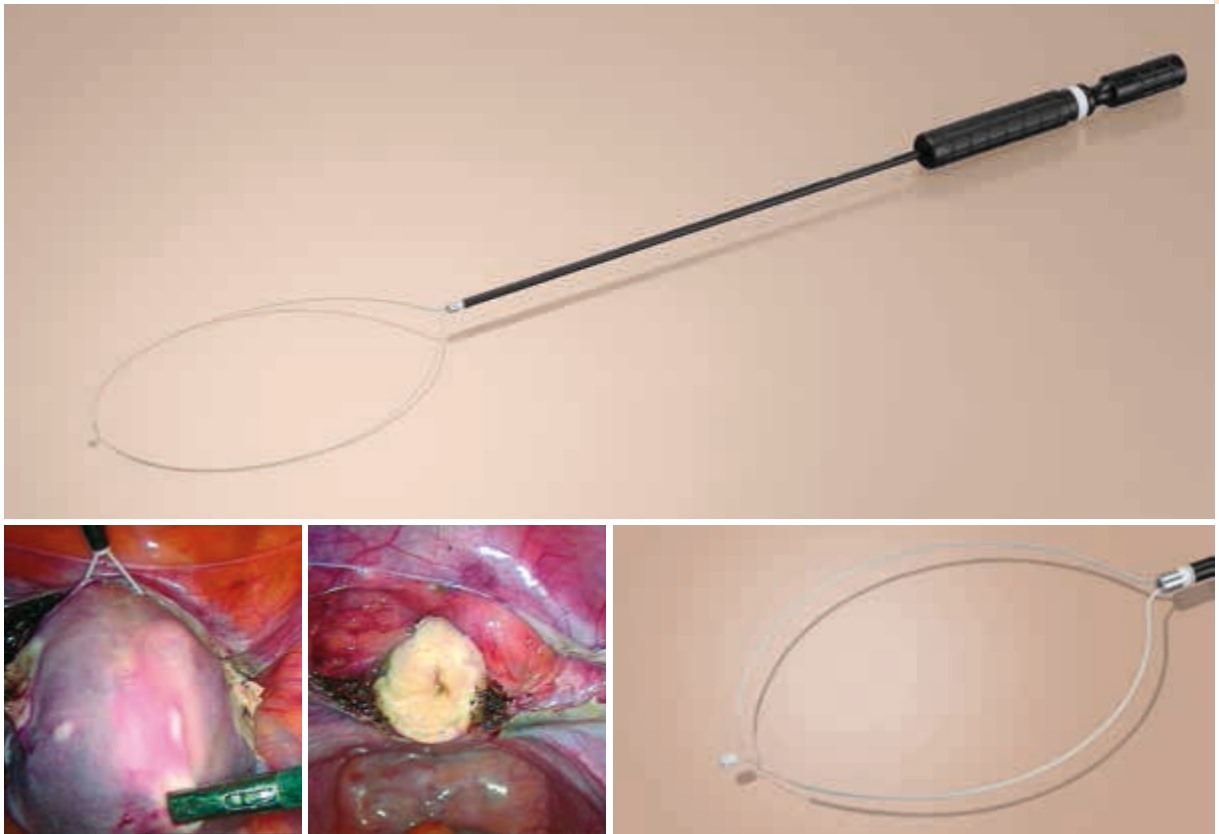
For laparoscopic sacrocolpopexy, which has increasingly become the standard procedure for treating various forms of prolapses characterized by a descensus of the vaginal vault or uterus, KARL STORZ now offers a multifunctional instrument – **the SCHÄR manipulator**.

Thanks to the variable adjustable working insert, it provides optimal support for performing the following procedures:

- Supracervical hysterectomy
- Sacrocervicopexy surgery after supracervical hysterectomy
- Sacrocolpopexy of the vaginal stump after a previous hysterectomy
- Sacrohysteropexy (sacrocolpopexy with uterine preservation)

The flat shape of the manipulator allows optimal visualization and dissection of the front and back walls of the vagina in order to fixate the mesh with a suture.

26168 SC **SCHÄR Manipulator**
including:
Handle, incl. cleaning adaptor
Working Element and **Working Insert**



SupraLoop – Bipolar Loop Now Available

For laparoscopic supracervical hysterectomy

In addition to the well-known SUPRALOOP unipolar loop, KARL STORZ now offers a bipolar SUPRALOOP for the removal of the uterus in supracervical hysterectomy.

- No neutral electrode necessary for the bipolar SUPRALOOP
- Loop available in two sizes
- Reduced operating time thanks to quick removal of the uterus
- Additional cost savings thanks to reusable handle and outer sheath

26183 N **SUPRALOOP Set**, bipolar, size 5 mm, length 30 cm

consisting of:

26183 NA **Handle**, with connector pin for bipolar coagulation, **autoclavable**

26183 MB **Outer Sheath**, insulated, **autoclavable**, size 5 mm, length 30 cm

26183 NC **Spare Loop for SUPRALOOP**, size 120 x 85 mm, unsterile, for single use

26183 ND **Spare Loop for SUPRALOOP**, bipolar, size 200 x 150 mm, unsterile, for single use, for use with Handle 26183 NA and Outer Sheath 26183 MB

It is recommended to check the suitability of the product for the intended procedure prior to use.



THE DIAMOND STANDARD

KARL STORZ SE & Co. KG
Dr.-Karl-Storz-Straße 34, 78532 Tuttlingen/Germany
Postbox 230, 78503 Tuttlingen/Germany
Phone: +49 (0)7461 708-0
Fax: +49 (0)7461 708-105
E-Mail: info@karlstorz.com
www.karlstorz.com